

FOR SALE



CLOVER  
RESIDENTIAL

PRESENTS

303-1515 Redfern St

## THE NEIGHBOURHOOD

---



DISCOVER

# Jubilee

The Jubilee neighbourhood is a quiet, walkable community in the heart of Victoria - ideally positioned between Downtown and Oak Bay Village, with Save-On-Foods, transit, cafes, and everyday amenities all within easy reach. Known for its character homes, green spaces, and strong community feel, Jubilee attracts a stable mix of hospital professionals, families, and long-term residents who value central living without the bustle of the city core.





**\$495,000**

**Listed by:**

Ole Schmidt & Michelle Matheson

**Neighbourhood:** Victoria - Jubilee

**Bedrooms:** 1

**Bathrooms:** 1

**Living Area:** 495 Sq.Ft.

**Year Built:** 2019

**Taxes:** \$2,824 (Tax Year: 2025)

**Strata:** \$313

**MLS:** 1034725

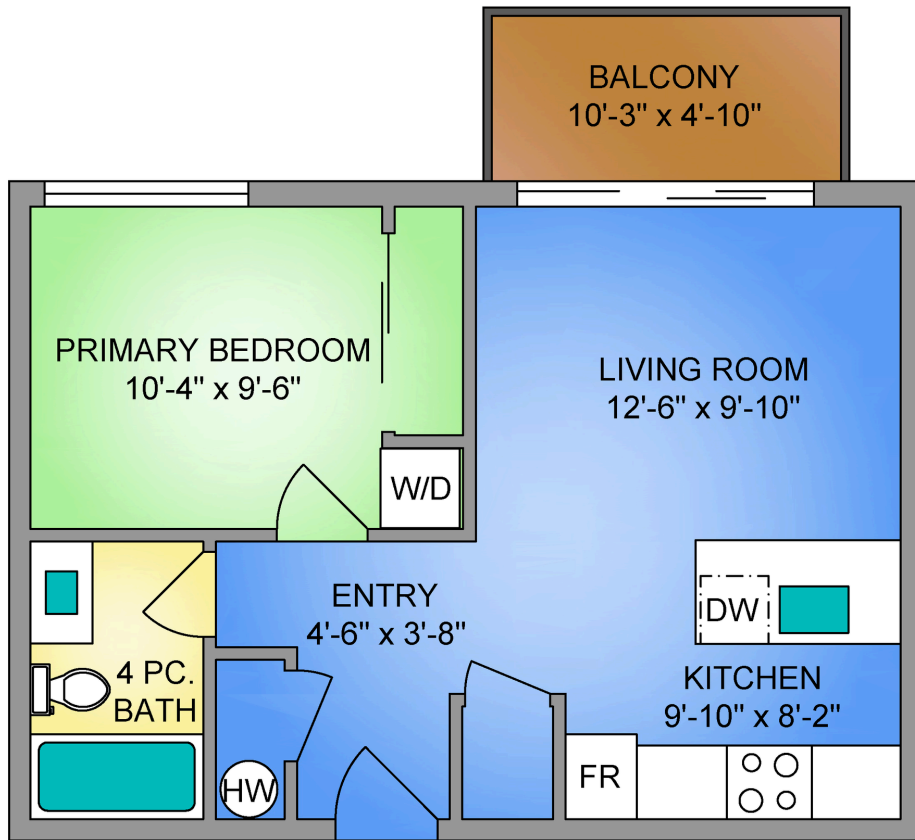
## 303-1515 Redfern St

A newer one-bedroom on Oak Bay Avenue at this price point isn't supposed to exist. This is the exception: top floor of Blu on Redfern, a boutique 8-unit building from 2019 - pristine inside and out. South-facing exposure flood the open-plan layout with natural light, with views overlooking one of the city's best neighbourhoods. The kitchen features quartz countertops, stainless appliances, and custom cabinetry. Full 4-piece bath with soaker tub. Wide-plank vinyl throughout. In-suite laundry and storage, off-street parking, bike lock-up, and an elevator - daily life runs smoothly. Step outside to Discovery Coffee, Red Barn Market, Oak Bay Rec, and the village shops. Walk or bike to the oceanfront, Willows Beach, and the marina. Royal Jubilee Hospital, transit, and Downtown Victoria are all minutes away. South-facing balcony for morning coffee or a summer afternoon. Pets welcome. Right-sized, beautifully finished, and ideally located on the Oak Bay/Jubilee border.

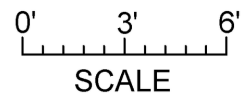
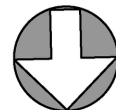
UNIT 303 - 1515 REDFERN STREET

496 SQ. FT.

9'-0" CEILING HEIGHT



NORTH



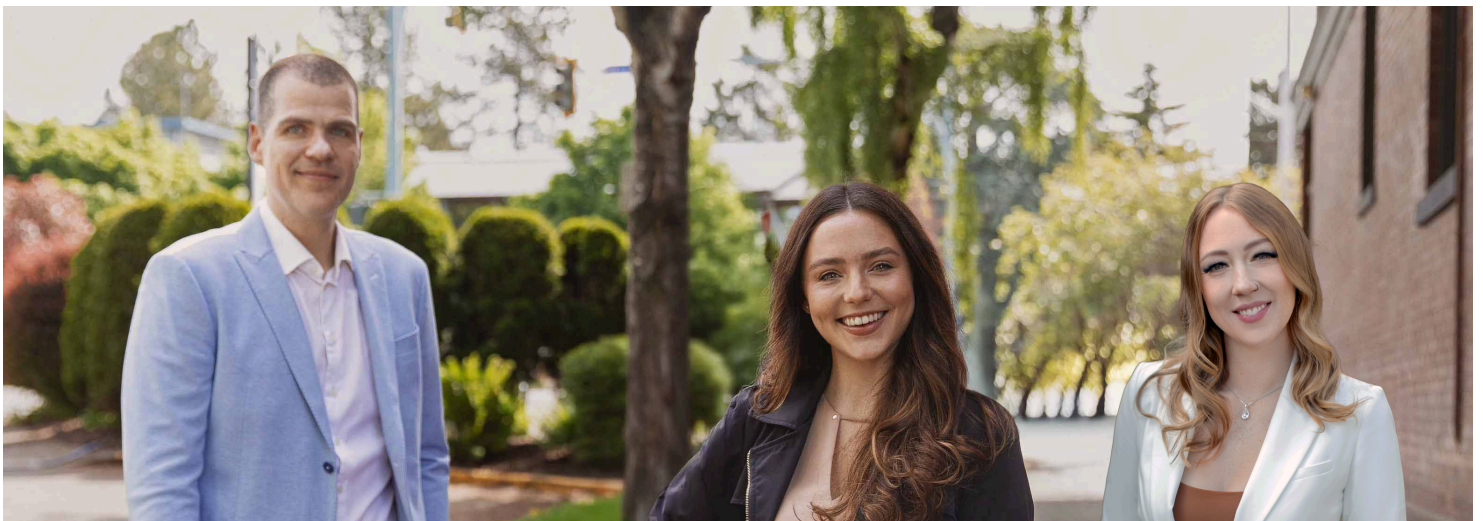
250-884-9753  
matt@propermeasure.com  
www.propermeasure.com



UNIT 303 - 1515 REDFERN STREET JUNE 2, 2026 PREPARED FOR THE EXCLUSIVE USE OF CLOVER RESIDENTIAL PLANS MAY NOT BE 100% ACCURATE, IF CRITICAL BUYER TO VERIFY.		
FLOOR	AREA (SQ. FT.)	
	FINISHED	BALCONY
THIRD	496	50



## GET TO KNOW US



**Ole Schmidt**  
MANAGING BROKER,  
CO-OWNER

**Hannah Hayworth**  
REALTOR®,  
SALES TEAM

**Michelle Matheson**  
REALTOR®,  
SALES TEAM

### EMAIL

[Sales@CloverResidential.com](mailto:Sales@CloverResidential.com)

### TEXT/CALL

250-383-7100



**CLOVER**  
RESIDENTIAL