

FOR SALE



CLOVER
RESIDENTIAL

PRESENTS

2112 Granite St



DISCOVER

Oak Bay



With its quaint tree-lined streets and many shops, boutiques, restaurants, and cafés, Oak Bay has often been described as more English than England itself. This is a charming neighbourhood that will take you back to another time.





\$1,279,000

Listed by:

Ole Schmidt & Michelle Matheson

Neighbourhood: Oak Bay

Bedrooms: 2 + den

Bathrooms: 2

Living Area: 1995 sq ft (Strata Plan)

Year Built: 1989

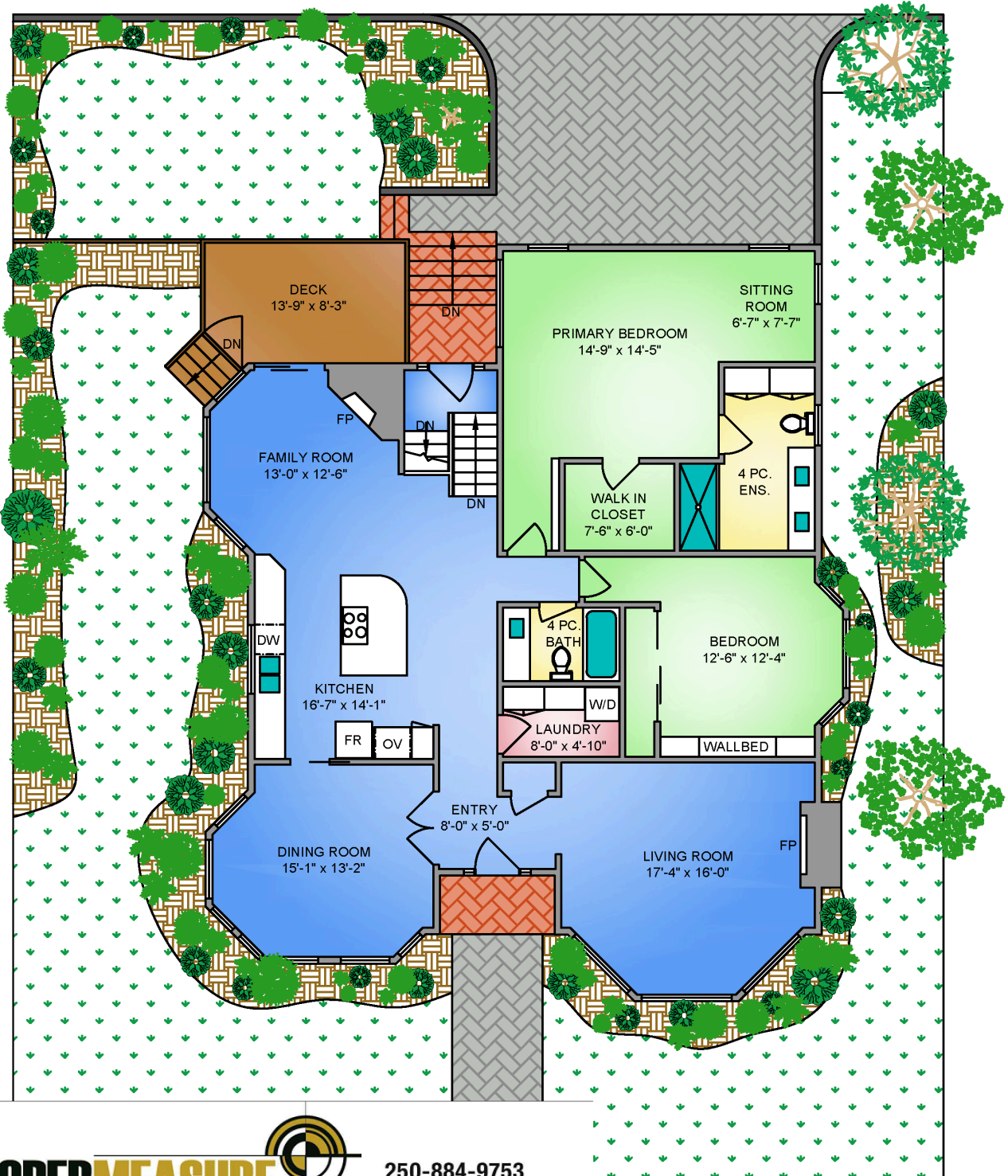
Taxes: \$5,652 (Tax Year 2025)

MLS: 1039424

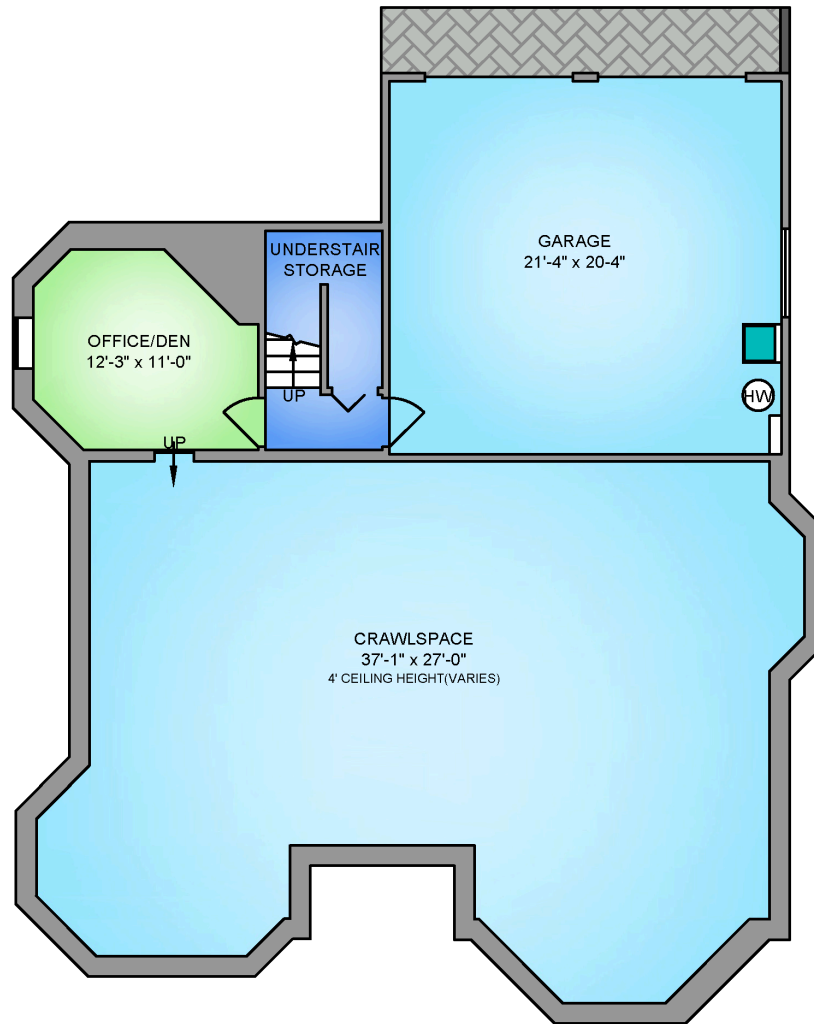
2112 Granite St

Steps from the boutiques, cafés, and charm of Oak Bay Village - one of Victoria's most beloved neighbourhoods - this rare stand-alone end-unit townhouse is a truly unique offering. No adjoining walls, light from four sides, and a serene garden setting that feels far more like a private home than a strata. The meticulously renovated main level impresses at every turn: open-concept kitchen with large island and Miele/Fisher & Paykel appliances, spacious primary with wheelchair-accessible 4-piece ensuite, separate living and dining rooms, white oak engineered floors, a dedicated laundry room, and a generous deck perfect for morning coffee or summer entertaining. The lower level adds a home office, double garage, and ample storage. New hot water tank and refreshed attic insulation round out an impressive list of improvements. For discerning 55+ buyers seeking a move-in ready 2 bed, 2 bath + den home in one of Greater Victoria's most walkable, storied communities - this is it.

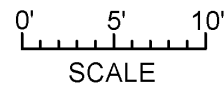
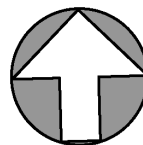
MAIN FLOOR
1788 SQ. FT.
8' CEILING HEIGHT



LOWER FLOOR
248 SQ. FT.
8' CEILING HEIGHT



NORTH



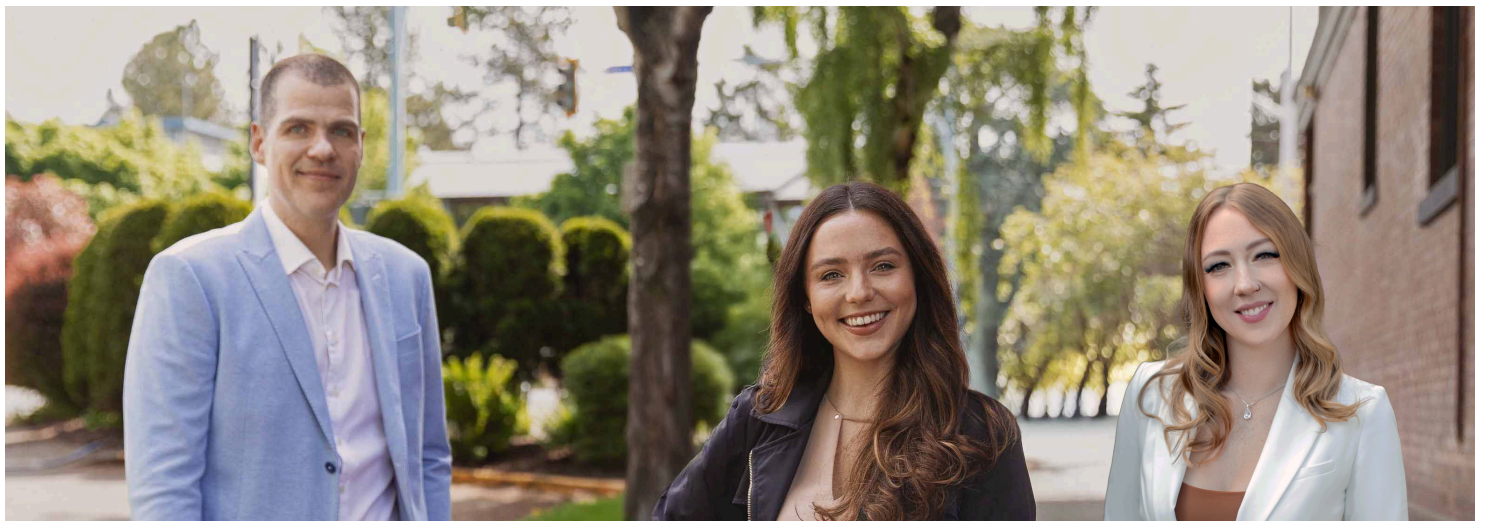
CLOVER
 RESIDENTIAL

2112 GRANITE STREET JUNE 9, 2026 PREPARED FOR THE EXCLUSIVE USE OF CLOVER RESIDENTIAL TD PLANS MAY NOT BE 100% ACCURATE, IF CRITICAL BUYER TO VERIFY.				
FLOOR	AREA (SQ. FT.)			
	FINISHED	CRAWLSPACE	GARAGE	DECK
MAIN	1788	-	-	111
LOWER	248	1079	455	-
TOTAL	2036	1079	455	111





GET TO KNOW US



Ole Schmidt
MANAGING BROKER,
CO-OWNER

Hannah Hayworth
REALTOR®,
SALES TEAM

Michelle Matheson
REALTOR®,
SALES TEAM

EMAIL

Sales@CloverResidential.com

CALL

250-383-7100



CLOVER
RESIDENTIAL