

FOR SALE



CLOVER
RESIDENTIAL



PRESENTS

15 Linden Ave



DISCOVER

Fairfield



Equally hip and historic, Fairfield is one of Victoria's most desirable neighbourhoods. Park your car and start exploring—you're within walking distance of everything.

Virtually Staged Photo



Virtually Staged Photo



Virtually Staged Photo





\$1,625,000

Listed by:

Ole Schmidt & Hannah Hayworth

Neighbourhood: Fairfield West

Bedrooms: 4

Bathrooms: 2

Living Area: 1951 sq ft

Year Built: 1931

Taxes: \$7,559 (Tax Year 2025)

MLS: 1032434

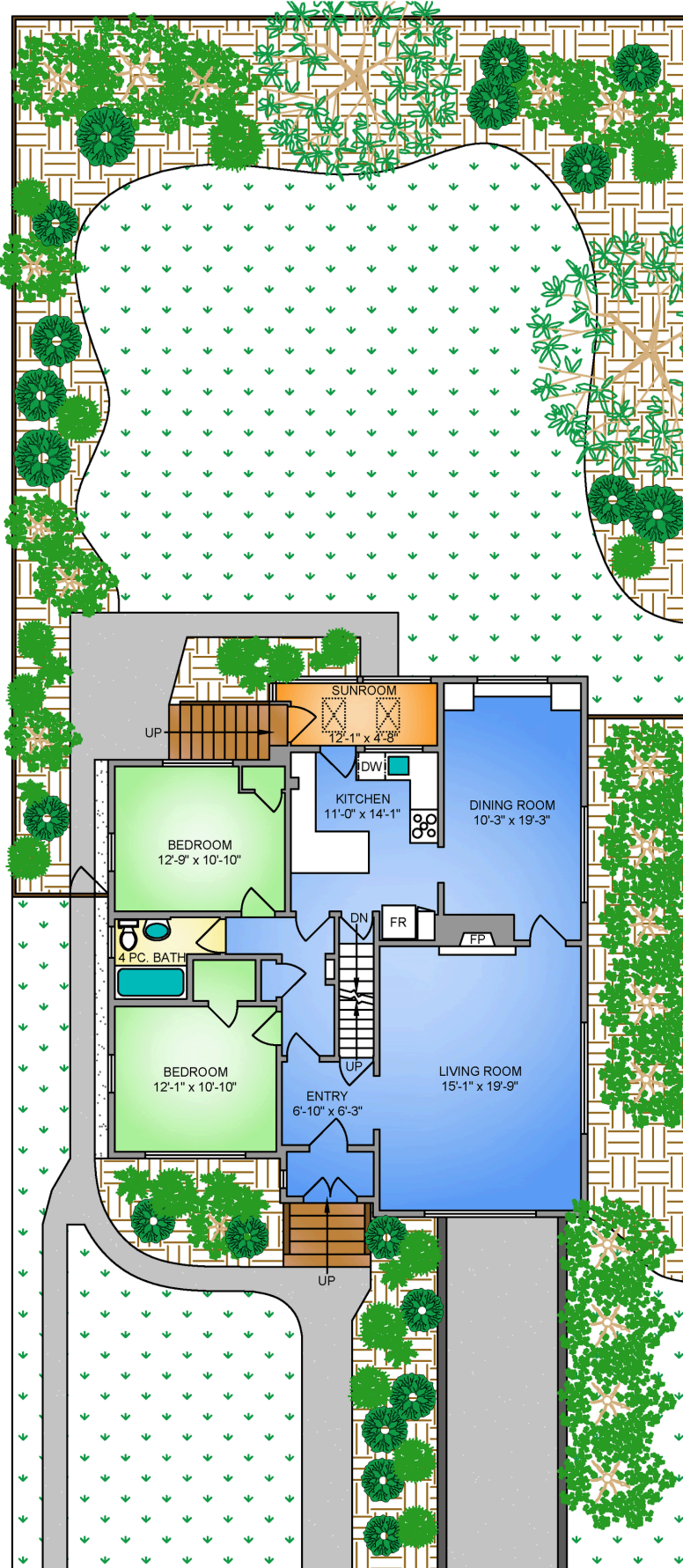
15 Linden Ave

Timeless character meets an unbeatable address on one of Fairfield's most sought-after streets - steps from the picturesque Dallas Road waterfront, and with Beacon Hill Park just around the corner. This 4-bedroom, 2-bathroom home radiates heritage charm: original hardwood floors, cove ceilings, generous room sizes, a dedicated dining room, and an inviting living area that balances classic elegance with everyday comfort. A full-height basement presents exciting potential for expanded living - genuine room to grow as your needs evolve. Step outside to a large, private backyard: a rare and peaceful retreat this close to the water, ideal for gardening, entertaining, or simply soaking up the sunshine. And the neighbourhood? Fairfield is what most communities strive to be - walkable, vibrant, and rich with character. Cook Street Village, world-class cycling routes, beloved local cafés and pubs, and a welcoming mix of families, creatives, and long-time residents are all at your doorstep. Few places in Victoria offer this quality of life so effortlessly.

FLOOR PLANS

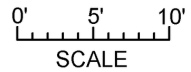
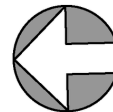


250-884-9753
 matt@propermeasure.com
 www.propermeasure.com



MAIN FLOOR
1246 SQ. FT.
 8'-0" CEILING HEIGHT

NORTH



15 LINDEN AVENUE
 MAY 26, 2026
 PREPARED FOR THE EXCLUSIVE USE OF CLOVER RESIDENTIAL LTD
 PLANS MAY NOT BE 100% ACCURATE, IF CRITICAL BUYER TO VERIFY.

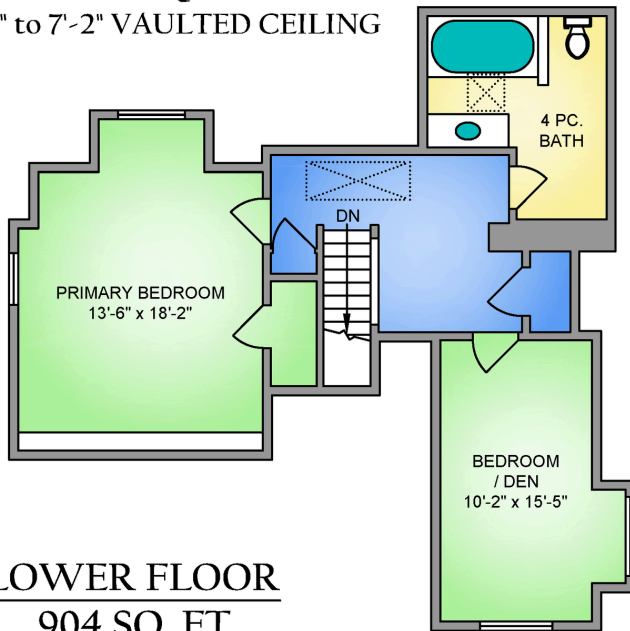
FLOOR	AREA (SQ. FT.)			
	FINISHED	UNFINISHED	SUNROOM	GARAGE
MAIN	1246	-	61	-
UPPER	705	-	-	-
LOWER	-	904	-	236
TOTAL	1951	904	61	236

FLOOR PLANS

UPPER FLOOR

705 SQ. FT.

2'-10" to 7'-2" VAULTED CEILING



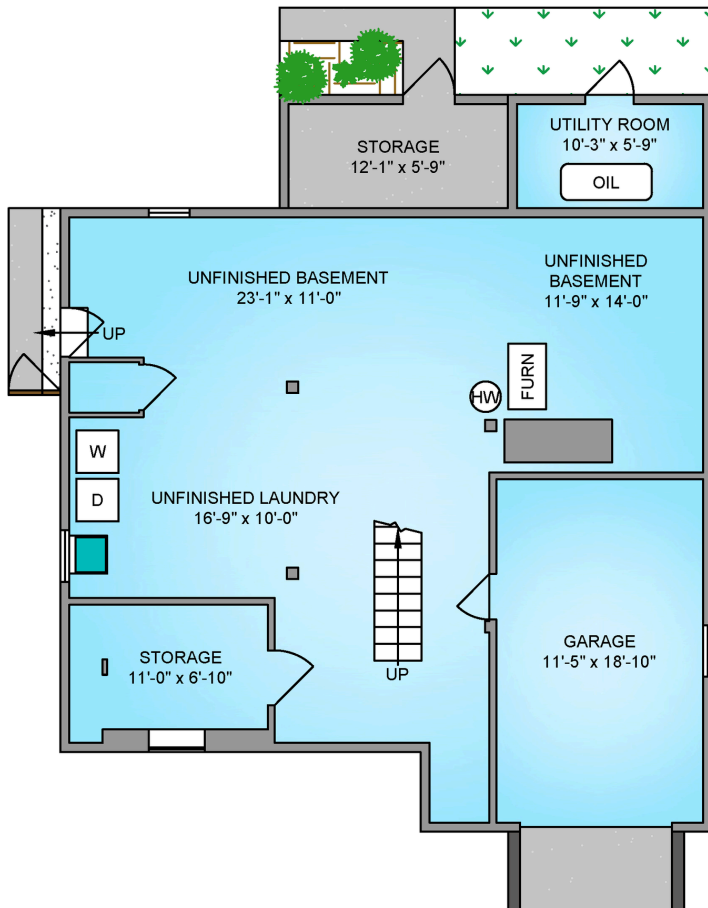
250-884-9753
matt@propermeasure.com
www.propermeasure.com



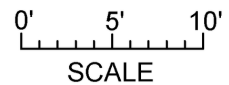
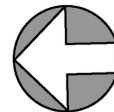
LOWER FLOOR

904 SQ. FT.

7'-0" CEILING HEIGHT



NORTH



15 LINDEN AVENUE MAY 26, 2026				
PREPARED FOR THE EXCLUSIVE USE OF CLOVER RESIDENTIAL LTD PLANS MAY NOT BE 100% ACCURATE, IF CRITICAL BUYER TO VERIFY.				
FLOOR	AREA (SQ. FT.)			
	FINISHED	UNFINISHED	SUNROOM	GARAGE
MAIN	1246	-	61	-
UPPER	705	-	-	-
LOWER	-	904	-	236
TOTAL	1951	904	61	236

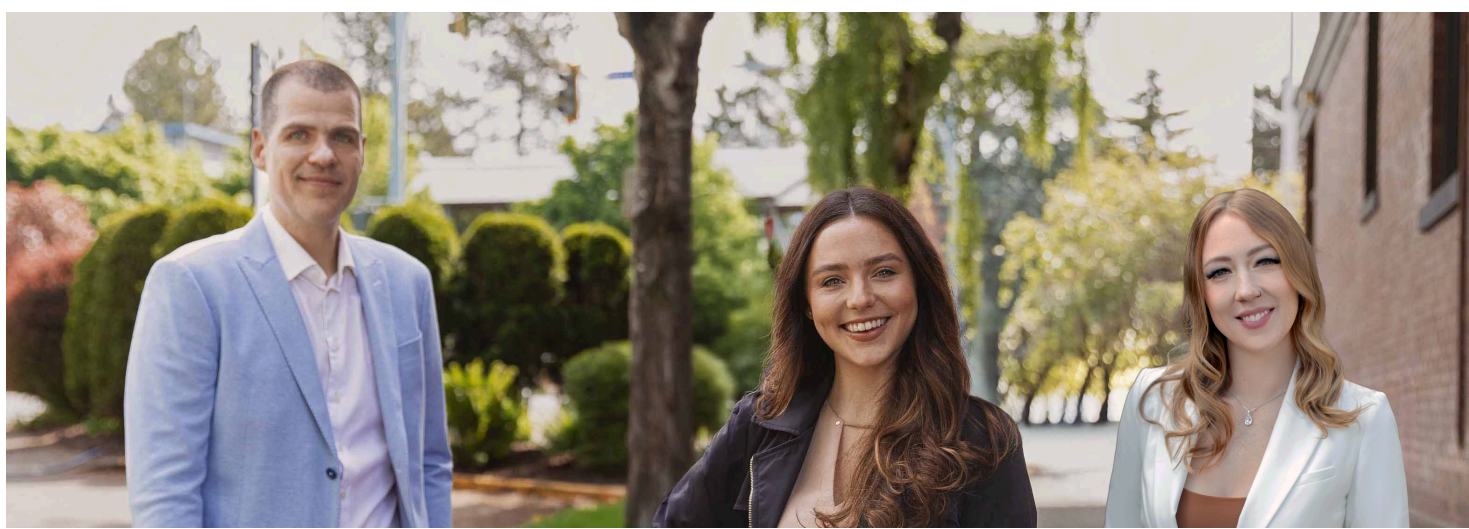


Virtually Staged Photo





GET TO KNOW US



Ole Schmidt
MANAGING BROKER,
CO-OWNER

Hannah Hayworth
REALTOR®,
SALES TEAM

Michelle Matheson
REALTOR®,
SALES TEAM

EMAIL
Sales@CloverResidential.com

CALL
250-383-7100



CLOVER
RESIDENTIAL