

FOR SALE

---



CLOVER  
RESIDENTIAL

PRESENTS

123-1025 Inverness Rd



DISCOVER

# Saanich East



The Quadra area of Saanich East is a vibrant community that celebrates diversity - reflected in the active and beloved multi-cultural and local businesses. Conveniently located between Downtown and Uptown with all amenities, public transport, and parks within walking distance.



**\$335,000**

**Listed by:**

Ole Schmidt & Michelle Matheson

**Neighbourhood:** Saanich East

**Bedrooms:** 1

**Bathrooms:** 1

**Living Area:** 710 sq ft (strata plan)

**Year Built:** 1974

**Taxes:** \$1,729 (Tax Year 2025)

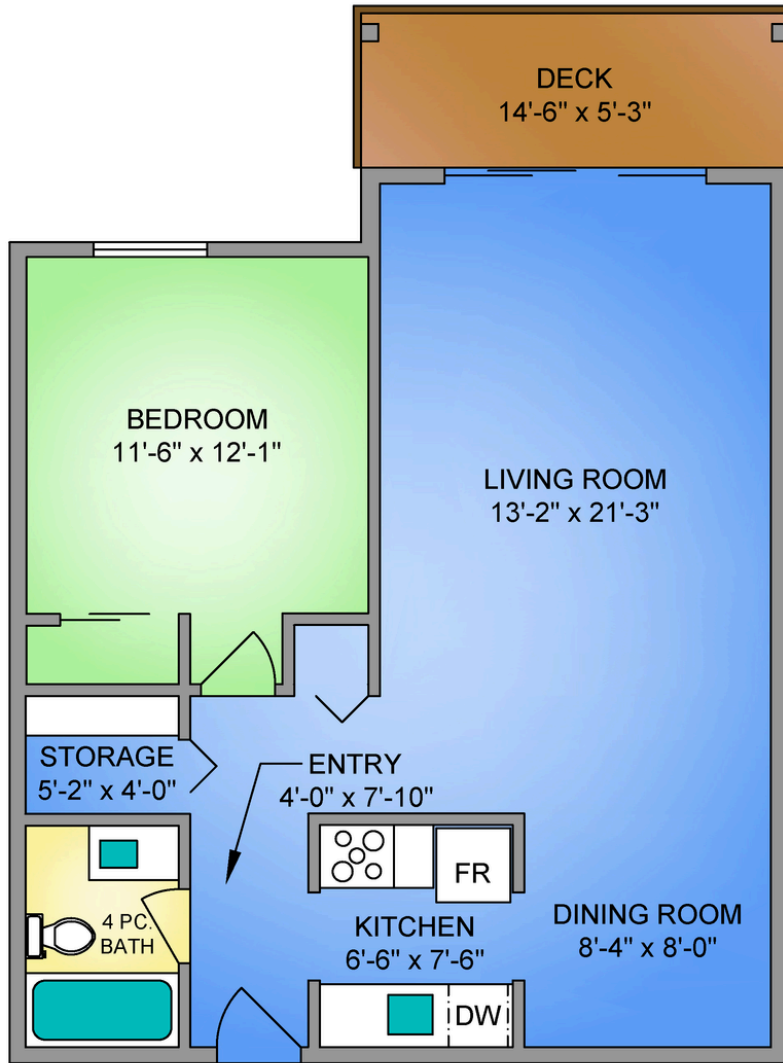
**Strata Fee:** \$362.09

**MLS:** 1032668

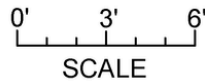
## 123-1025 Inverness Rd

Set on a quiet residential road beside Rutledge Park, this one-bedroom condo at Kensington Terrace offers a floor plan and finish level that genuinely outperform the price point. At 710 finished square feet, the layout is more generous than most newer one-bedroom units - a proper dining room with built-in shelving, a walk-in pantry, and a living room large enough for a full furniture arrangement without compromise. The kitchen has been updated with hard surface countertops, refreshed cabinetry, and stainless steel appliances. The bathroom has been renovated with a new tub, surround, and fresh finishes throughout. Engineered hardwood runs through the main living areas. The northeast-facing balcony sits just above grade, overlooking a landscaped entrance and green space. Parking and a separate storage locker are included. Building amenities include a fitness centre, sauna, billiards room, workshop, and resident lounge. Thrifty Foods, Mayfair Mall, Uptown, and transit are all within easy reach.

**UNIT 123 - 1025 INVERNESS ROAD**  
**710 SQ. FT.**  
 8' CEILING HEIGHT



NORTH



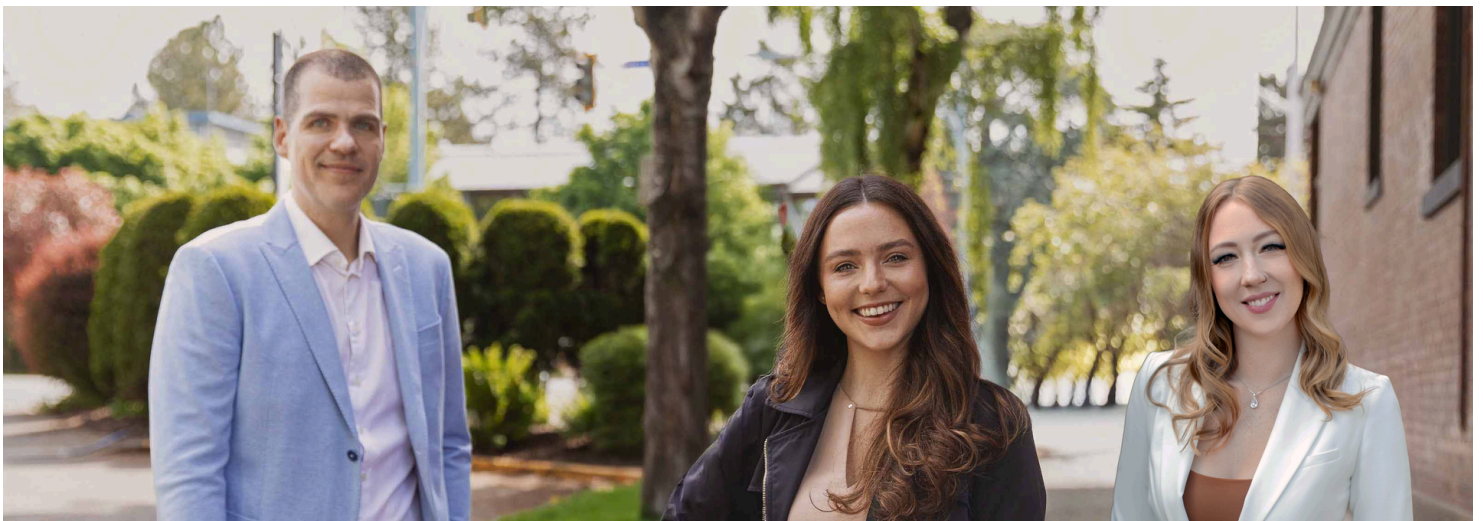
250-884-9753  
 matt@propermeasure.com  
 www.propermeasure.com



#123 - 1025 INVERNESS ROAD MAY 4, 2026 PREPARED FOR THE EXCLUSIVE USE OF CLOVER RESIDENTIAL LTD PLANS MAY NOT BE 100% ACCURATE. IF CRITICAL BUYER TO VERIFY.		
FLOOR	AREA (SQ. FT.)	
	FINISHED	DECK
FIRST	710	75



## GET TO KNOW US



**Ole Schmidt**  
MANAGING BROKER,  
CO-OWNER

**Hannah Hayworth**  
REALTOR®,  
SALES TEAM

**Michelle Matheson**  
REALTOR®,  
SALES TEAM

### EMAIL

[Sales@CloverResidential.com](mailto:Sales@CloverResidential.com)

### TEXT/CALL

250-383-7100



**CLOVER**  
RESIDENTIAL