

FOR SALE

---



CLOVER  
RESIDENTIAL

PRESENTS

401-1525 Hillside Ave.



DISCOVER

# Oaklands

Oaklands is a centrally located Victoria neighbourhood known for its strong sense of community, leafy streets, and everyday convenience. Character homes, mature Garry oaks and chestnut trees, and a mix of housing options create a welcoming, established feel, while hubs like Hillside Centre and the emerging Haultain Village provide walkable amenities and local charm. Popular with families and professionals alike, Oaklands offers easy access to parks, schools, and downtown, delivering a connected, community-driven lifestyle with a relaxed, residential pace.



**\$429,000**

**Listed by:** Hannah Hayworth

---

**Neighbourhood:** Oaklands

---

**Bedrooms:** 1

---

**Bathrooms:** 1

---

**Living Area:** 702 Sq Ft

---

**Year Built:** 1976

---

**Strata fee:** \$346

---

**Taxes:** \$ 1,752 (Tax Year: 2025)

---

**MLS:** 1029960

**401 - 1525 Hillside Ave.**

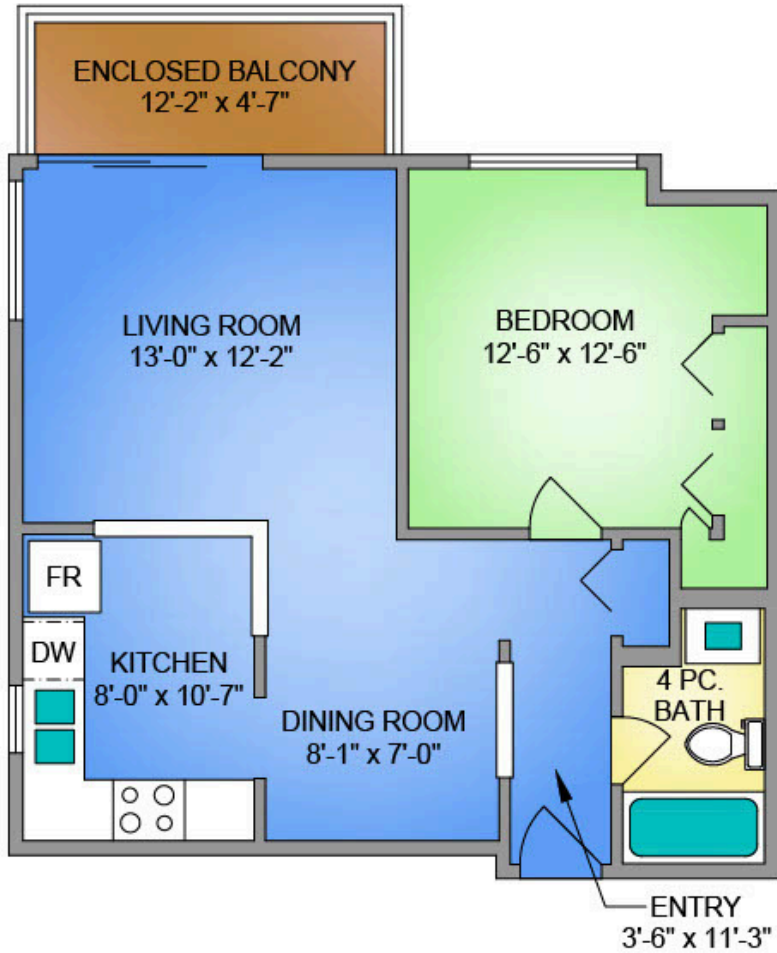
Immaculate and stylish, this top-floor corner unit has been thoughtfully updated throughout and is perched above a vibrant hub of amenities in the friendly Oaklands neighbourhood. It's clear this home has been cherished from the moment you step inside, reflected in the vinyl plank flooring and chic light fixtures throughout, a pristine 4pc bath, and a full kitchen refresh featuring modern tile, updated cabinetry, countertops, and SS appliances. The open-concept living and dining area is bright and inviting, with an enclosed balcony perfect for year-round enjoyment, plus a generously sized bedroom. Proactive strata with recent upgrades including a new roof (2024) and newer vinyl windows. Pet-friendly building with parking, separate storage, bike storage, games room and workshop. Ideally located just steps to Hillside Shopping Centre for groceries, cafés, and daily essentials, with nearby parks and major transit at your doorstep for an easy commute to Downtown, Camosun College, or UVic.

# FLOOR PLANS

## UNIT 401 - 1525 HILLSIDE AVENUE

635 SQ. FT.

8'-0" CEILING HEIGHT



NORTH



THE  
**FOLIO GROUP**



250-884-9753  
matt@propermeasure.com  
www.propermeasure.com



**CLOVER**  
RESIDENTIAL

UNIT 401 - 1525 HILLSIDE AVENUE			
APRIL 15, 2026			
PREPARED FOR THE EXCLUSIVE USE OF CLOVER RESIDENTIAL LTD			
PLANS MAY NOT BE 100% ACCURATE, IF CRITICAL BUYER TO VERIFY.			
FLOOR	AREA (SQ. FT.)		
	FINISHED	BALCONY	TOTAL
FOURTH	635	65	700



## CONNECT



Hannah Hayworth  
REALTOR®



## EMAIL

Hannah@CloverResidential.com

## TEXT/CALL

250-588-9355

CLOVERRESIDENTIAL.COM

Clover Residential Ltd. | 394 Moss Street, Victoria, BC, V8V 4N1

THE  
FOLIO GROUP



**CLOVER**  
RESIDENTIAL