

FOR SALE



CLOVER
RESIDENTIAL

PRESENTS

204-369 Tyee Rd



DISCOVER

Vic West/Songhees



Just over the bridge from Victoria, Vic West/Songhees delivers waterfront walkways, lush green spaces, and incredible views. There's a distinctive West Coast feel to this community that explains why it's quickly become such a desirable place to live.



\$649,000

Listed by:

Ole Schmidt & Michelle Matheson

Neighbourhood: Vic West/Songhees

Bedrooms: 1 + den

Bathrooms: 1

Living Area: 889 Sq.Ft. (Strata Plan)

Year Built: 2023

Taxes: \$3,919 (Tax Year: 2025)

Strata Fee: \$504.89

MLS: 1030218

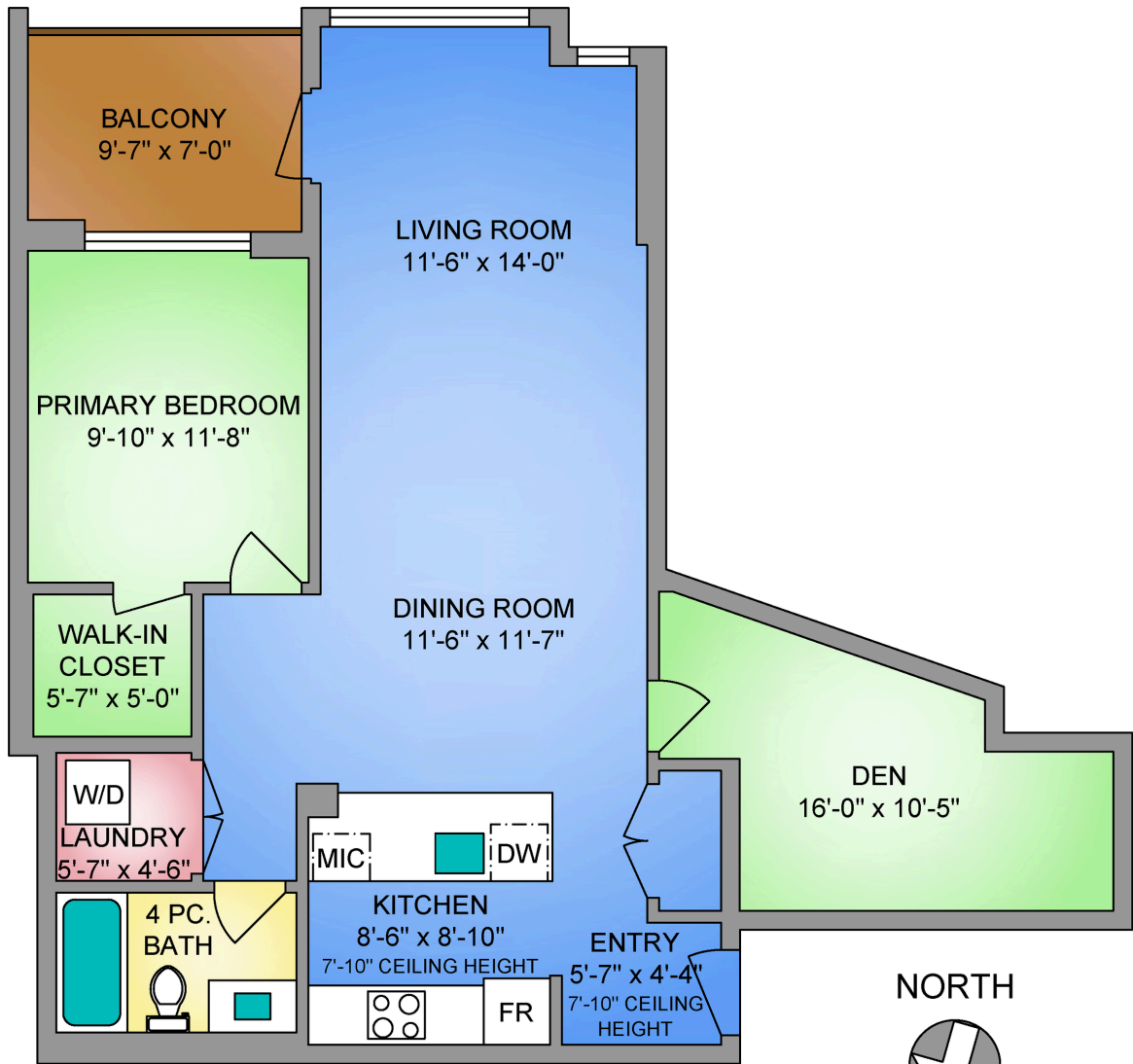
204-369 Tyee Rd

Welcome to Dockside Green - well suited to single professionals or couples seeking a true work-from-home layout. This spacious one-bedroom residence offers almost 900 sq ft of functional living, with a generous den that provides an ideal workspace and room for guests. Expansive windows fill the home with natural light, while the chef's kitchen features elegant cabinetry, gleaming countertops, and refined finishes alongside a spa-inspired bath. A private south-facing balcony offers a quiet outdoor retreat. Enjoy proximity to the Galloping Goose Regional Trail and a setting just outside Downtown Victoria that offers convenient access to the city while maintaining a relaxed neighbourhood feel. Stroll oceanfront pathways or visit nearby cafés, groceries, and amenities at Westside Village. Building amenities include a gym, bike service room, pet wash, resident lounge, and rooftop terrace with BBQs and sweeping views. EV-ready parking and separate storage included. Feel good about where you live.

UNIT 204 - 369 TYEE ROAD

889 SQ. FT.

8'-6" CEILING HEIGHT



NORTH



0' 3' 6'

SCALE



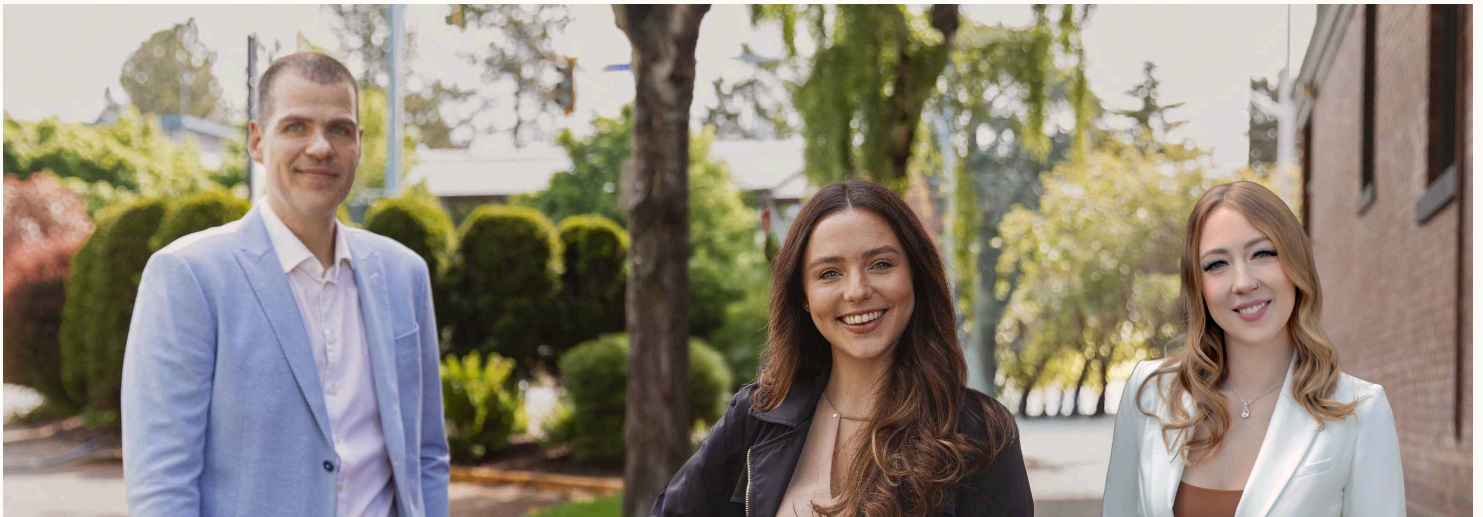
250-884-9753
 matt@propermeasure.com
 www.propermeasure.com



UNIT 204 - 369 TYEE ROAD		
APRIL 2, 2026		
PREPARED FOR THE EXCLUSIVE USE OF CLOVER RESIDENTIAL PLANS MAY NOT BE 100% ACCURATE, IF CRITICAL BUYER TO VERIFY.		
FLOOR	AREA (SQ. FT.)	
	FINISHED	BALCONY
SECOND	889	66



GET TO KNOW US



Ole Schmidt
MANAGING BROKER,
CO-OWNER

Hannah Hayworth
REALTOR®,
SALES TEAM

Michelle Matheson
REALTOR®,
SALES TEAM

EMAIL

Sales@CloverResidential.com

CALL

250-383-7100

[CLOVERRESIDENTIAL.COM](https://www.cloverresidential.com)

Clover Residential Ltd. | 394 Moss Street, Victoria, BC, V8V 4N1

THE
FOLIO GROUP



CLOVER
RESIDENTIAL