

FOR SALE



CLOVER  
RESIDENTIAL

PRESENTS

13-60 Dallas Rd





DISCOVER

# James Bay



Tucked behind the Legislature Buildings and the Inner Harbour, James Bay is one of Victoria's oldest neighbourhoods, with many original turn-of-the-century Victorian homes.





\$899,999

**Listed by:** Ole Schmidt & Hannah Hayworth

**Neighbourhood:** James Bay

**Bedrooms:** 2 + ground floor flex space

**Bathrooms:** 3

**Living Area:** 1,452 Sq.Ft. (Strata Plan)

**Year Built:** 2002

**Taxes:** \$4,627 (Tax Year: 2025)

**Strata Fee:** \$674.23

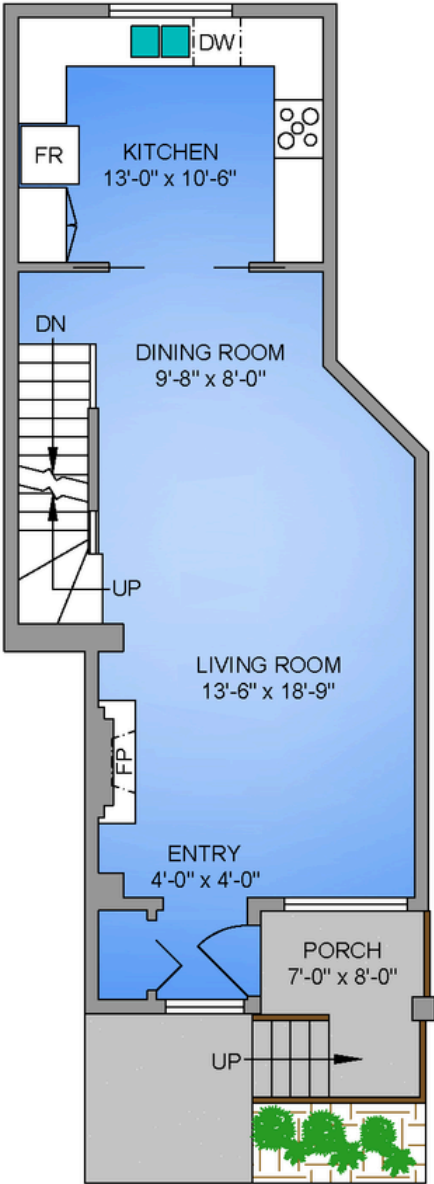
**MLS:** 1025175

## 13-60 Dallas Rd

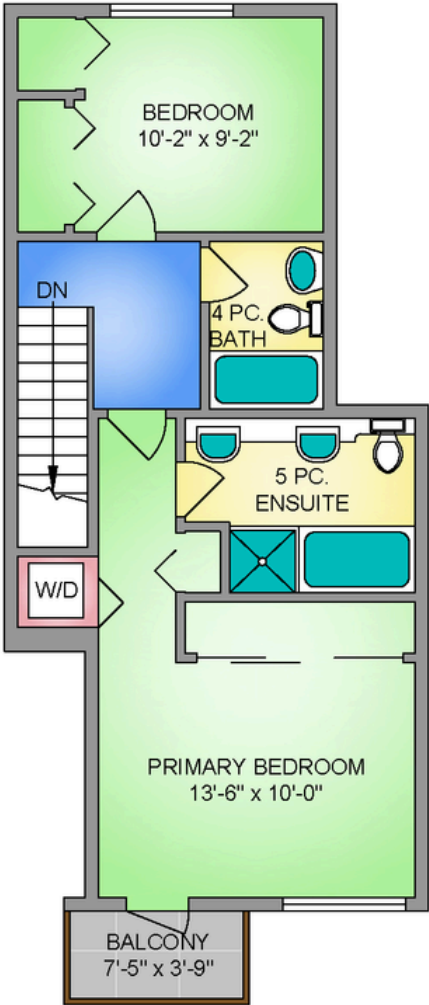
This could be the coastal lifestyle you've been waiting for. Step out your door and you feel like you're on holiday—Fisherman's Wharf, James Bay Village and the Dallas Road bike lanes are moments away. The open-concept main level features 9 ft. ceilings, wood floors, a gas fireplace and ocean glimpses, with a spacious kitchen connected to the living/dining area. The upper level is a true retreat with a water-facing primary bedroom, private balcony and 5-piece ensuite, plus a second bedroom, full bath and laundry, while the secure ground-level flex space off the garage works perfectly for guests, an office or a gym. Set in vibrant James Bay with a timeless brick exterior, this 3-storey, 2 bed/3 bath townhome offers over 1,450 sq ft of bright low-maintenance living. Also enjoy the benefits of a private front door and exclusive single vehicle garage. Tennis courts, a community garden and dog-friendly walking areas are all steps away, inviting you to settle into a neighbourhood feel you'll want to experience in person.

FLOOR PLANS

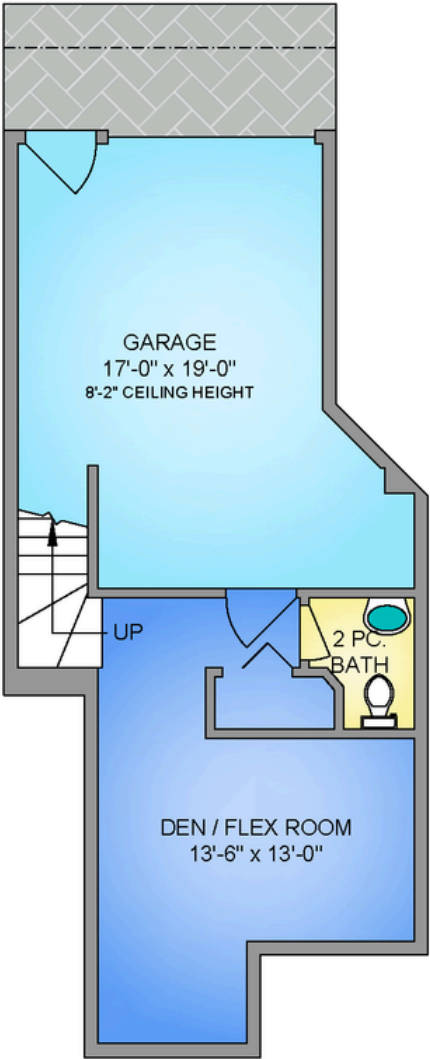
MAIN FLOOR  
600 SQ. FT.  
9'-0" CEILING HEIGHT



UPPER FLOOR  
569 SQ. FT.  
8'-0" CEILING HEIGHT



LOWER FLOOR  
272 SQ. FT.  
8'-0" CEILING HEIGHT



NORTH



THE  
**FOLIO GROUP**



250-884-9753  
matt@propermeasure.com  
www.propermeasure.com



**CLOVER**  
RESIDENTIAL

UNIT 13 - 60 DALLAS ROAD			
FEBRUARY 13, 2026			
PREPARED FOR THE EXCLUSIVE USE OF CLOVER RESIDENTIAL LTD			
PLANS MAY NOT BE 100% ACCURATE, IF CRITICAL BUYER TO VERIFY.			
FLOOR	AREA (SQ. FT.)		
	FINISHED	GARAGE	BALCONY/PORCH
MAIN	600	-	44
UPPER	569	-	28
LOWER	272	279	-
TOTAL	1441	279	72





## GET TO KNOW US



**Ole Schmidt**  
MANAGING BROKER,  
CO-OWNER

**William Johnson**  
REALTOR®,  
SALES TEAM

**Hannah Hayworth**  
REALTOR®,  
SALES TEAM

**Michelle Matheson**  
REALTOR®,  
SALES TEAM

### EMAIL

[Sales@CloverResidential.com](mailto:Sales@CloverResidential.com)

### TEXT/CALL

250-256-8371

[CLOVERRESIDENTIAL.COM](https://cloverresidential.com)

Clover Residential Ltd. | 394 Moss Street, Victoria, BC, V8V 4N1

THE  
**FOLIO GROUP**





CLOVER  
RESIDENTIAL