

FOR SALE



CLOVER
RESIDENTIAL

PRESENTS

2260 Kinross Ave



DISCOVER

Oak Bay



With its quaint tree-lined streets and many shops, boutiques, restaurants, and cafés, Oak Bay has often been described as more English than England itself. This is a charming neighbourhood that will take you back to another time.



\$1,165,000

Listed by:

Ole Schmidt & Hannah Hayworth

Neighbourhood: Oak Bay

Bedrooms: 4

Bathrooms: 3

Living Area: 1734 Sq.Ft. (Strata Plan)

Year Built: 2000

Taxes: \$5,215 (Tax Year: 2025)

Strata Fee: \$700.00

MLS: 1013673

*photos virtually staged

2260 Kinross Ave

Steps from the delights of Estevan Village and the shoreline of Willows Beach, this beautifully designed corner townhome offers over 1,700 square feet of light-filled living in one of Oak Bay's most walkable enclaves. With 3 bedrooms upstairs, 3 total baths, and a bright 4th bedroom (or generous office space) off the entry, the layout is ideal for both families and professionals. The private patio off the living room is perfect for morning coffee or evening wine, and with two secure underground parking stalls, in-suite laundry, and bike storage, every detail supports a low-maintenance lifestyle. From weekend strolls to Pure Vanilla Bakery to paddle boarding at Willows Beach, this is a home that connects you to the best of Oak Bay—where heritage charm, community spirit, and everyday ease come together.

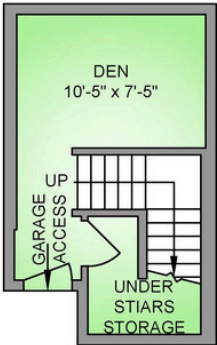
FLOOR PLANS

THE
FOLIO GROUP

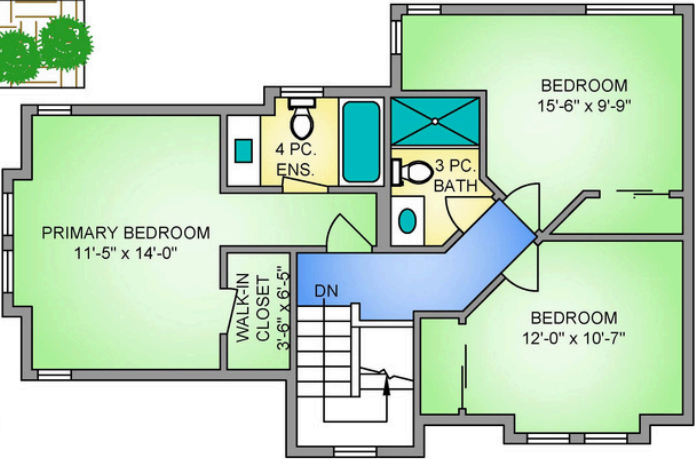
MAIN FLOOR
828 SQ. FT.
8'-10" CEILING HEIGHT



LOWER FLOOR
194 SQ. FT.
8'-0" CEILING HEIGHT



UPPER FLOOR
717 SQ. FT.
8'-0" CEILING HEIGHT

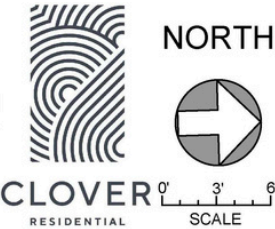


2260 KINROSS AVENUE
SEPTEMBER 17, 2025
PREPARED FOR THE EXCLUSIVE USE OF
PLANS MAY NOT BE 100% ACCURATE, IF CRITICAL BUYER TO VERIFY.

FLOOR	AREA (SQ. FT.)	
	FINISHED	PATIO
MAIN	828	84
UPPER	717	-
LOWER	194	-
TOTAL	1739	84



250-884-9753
matt@propermeasure.com
www.propermeasure.com





GET TO KNOW THE SALES TEAM



Ole Schmidt
MANAGING BROKER,
CO-OWNER, REALTOR®



Hannah Hayworth
REALTOR®



William Johnson
REALTOR®



Michelle Matheson
REALTOR®

EMAIL

Folio@CloverResidential.com

TEXT/CALL

250-256-8371

CLOVERRESIDENTIAL.COM

Clover Residential Ltd. | 394 Moss Street, Victoria, BC, V8V 4N1

THE
FOLIO GROUP



CLOVER
RESIDENTIAL