

FOR SALE



CLOVER  
RESIDENTIAL

THE  
FOLIO  
GROUP

PRESENTS

1301-1020 View St



DISCOVER

# Downtown



Situated along Victoria's picturesque Inner Harbour, Downtown is a vibrant neighbourhood ideal for shopping, dining, and leisurely spending your day and night. Bike or walk, you're always near the waterfront as well as neighbouring urban villages.





**\$599,900**

**Listed by:**

Ole Schmidt, Hannah Hayworth &  
William Johnson

**Neighbourhood:** Downtown

**Bedrooms:** 2

**Bathrooms:** 2

**Living Area:** 1106 Sq.Ft.

**Year Built:** 1991

**Taxes:** \$3265.41 (Tax Year: 2024)

**Strata Fee:** \$650

**MLS:** 1007562

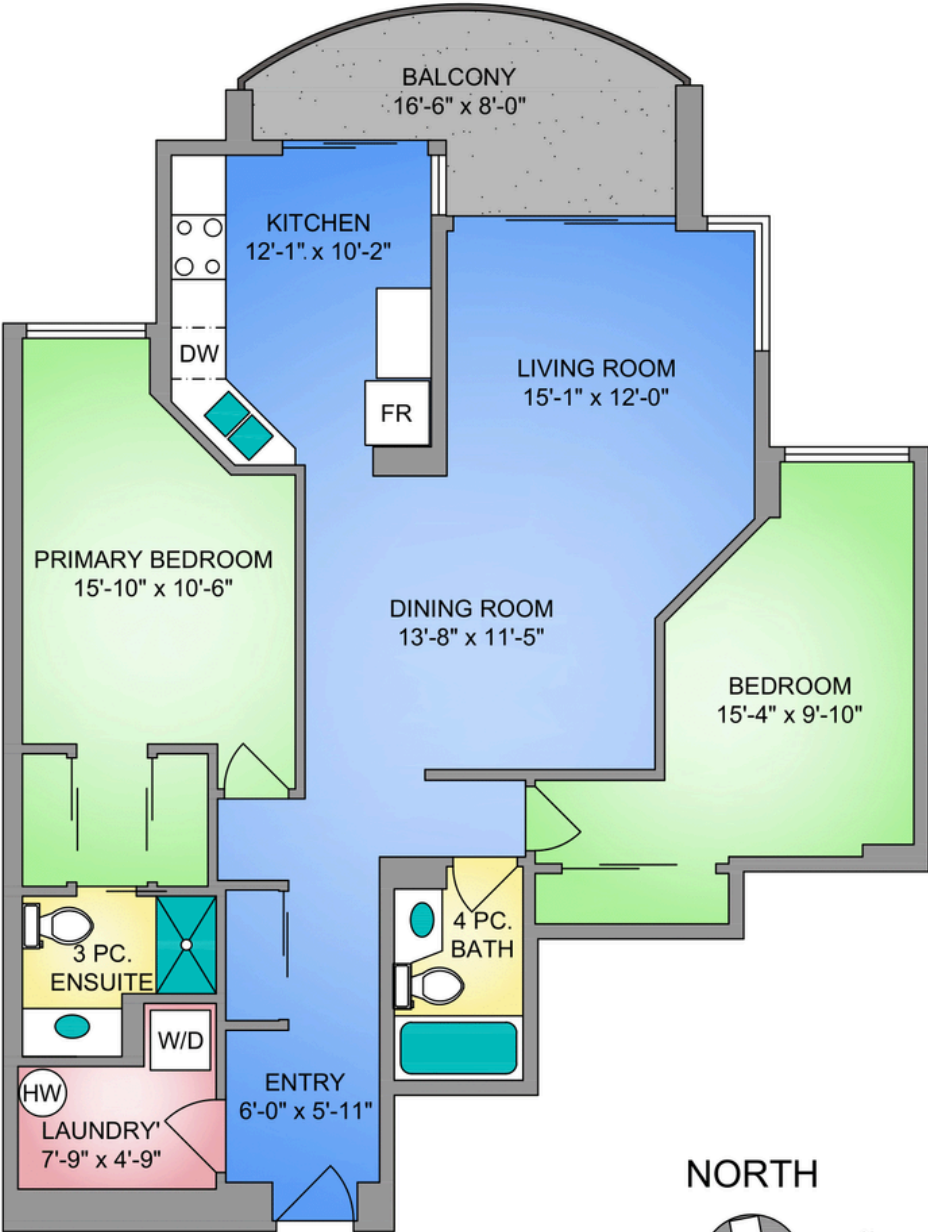
## 1301-1020 View St

Set high above the city on the 13th floor of Regents Park, this south-facing 2-bedroom, 2-bath condo offers expansive views of the ocean, Olympic Mountains, and Victoria's skyline.

With over 1,100 sq ft of well-planned living space, the home features a thoughtful split bedroom layout, a spacious primary suite with walk through closet and ensuite, in-suite laundry, and a large balcony to take in the views.

This well-managed steel and concrete building is pet friendly and includes secure underground parking, separate storage, a fitness centre, hot tub, and on-site caretaker, all just steps to groceries, local shops, dining, and the waterfront in the vibrant Harris Green neighbourhood.

UNIT 1301 - 1020 VIEW STREET  
1106 SQ. FT.  
8'-5" CEILING HEIGHT



THE  
**FOLIO GROUP**



250-884-9753  
matt@propermeasure.com  
www.propermeasure.com



NORTH



0' 3' 6'  
SCALE

UNIT 1301 - 1020 VIEW STREET JULY 22, 2025 PREPARED FOR THE EXCLUSIVE USE OF CLOVER RESIDENTIAL PLANS MAY NOT BE 100% ACCURATE, IF CRITICAL BUYER TO VERIFY.		
FLOOR	AREA (SQ. FT.)	
	FINISHED	BALCONY
THIRTEEN	1106	96





## GET TO KNOW US



**Ole Schmidt**  
MANAGING BROKER,  
CO-OWNER

**William Johnson**  
REALTOR®

**Hannah Hayworth**  
REALTOR®

### EMAIL

Folio@CloverResidential.com

### TEXT/CALL

250-256-8371

**CLOVERRESIDENTIAL.COM**

Clover Residential Ltd. | 394 Moss Street, Victoria, BC, V8V 4N1

THE  
**FOLIO GROUP**





CLOVER  
RESIDENTIAL