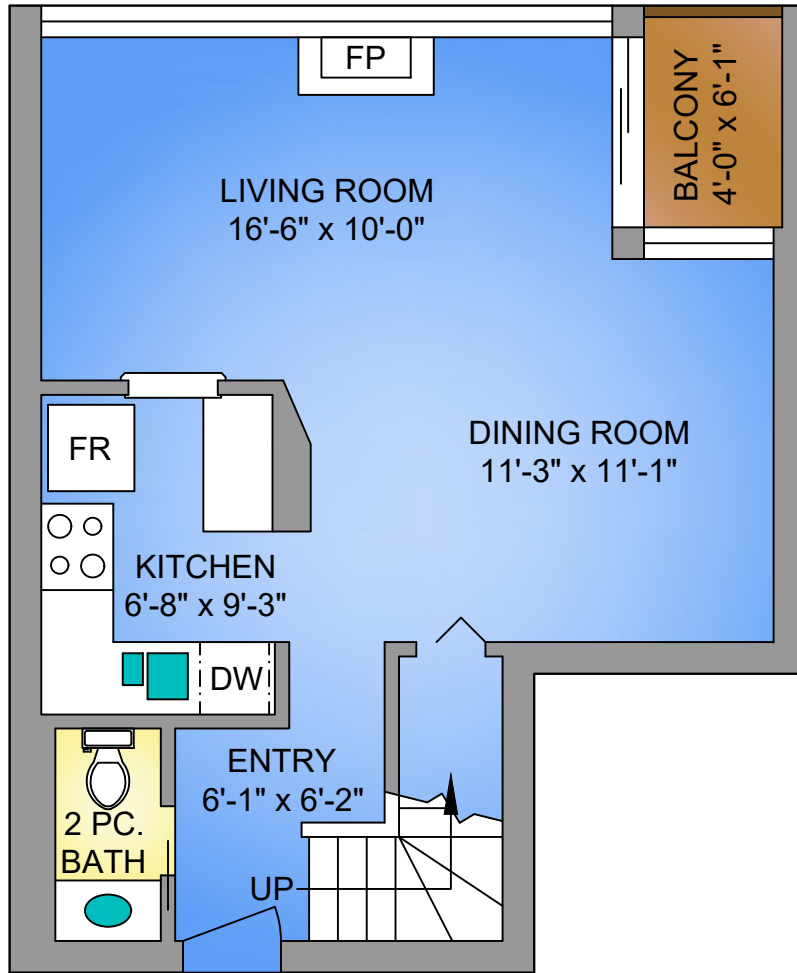


MAIN FLOOR

490 SQ. FT.

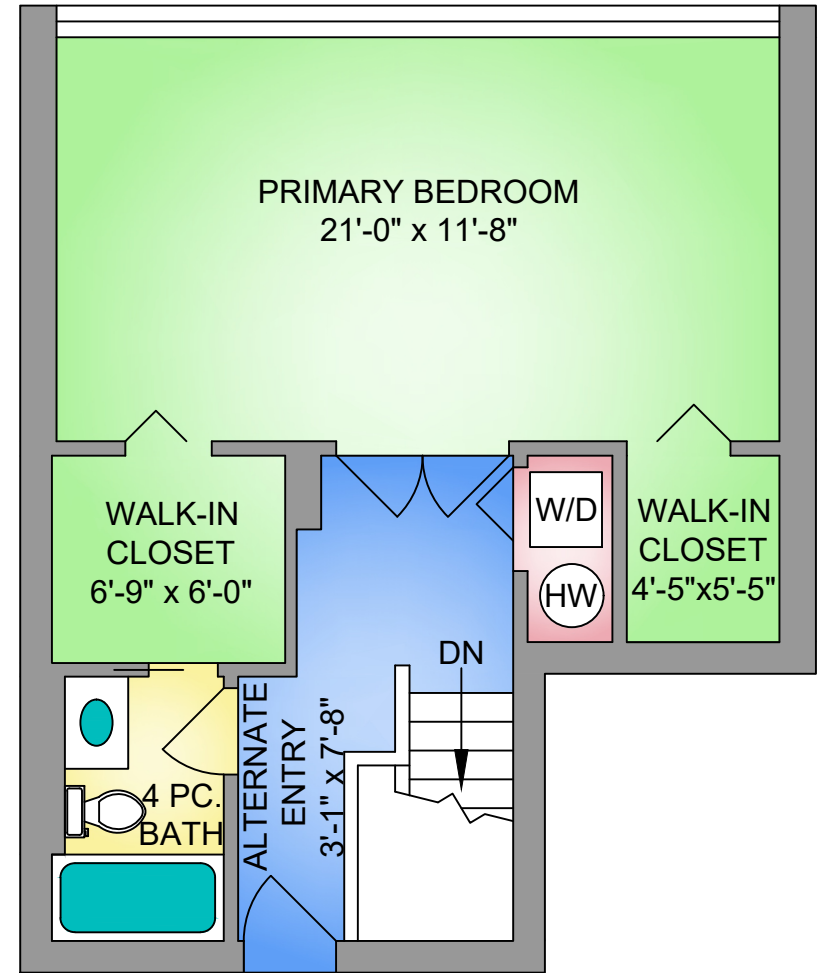
8'-0" CEILING HEIGHT



UPPER FLOOR

518 SQ. FT.

8'-0" CEILING HEIGHT



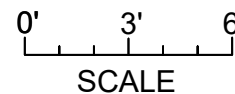
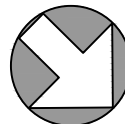
THE
FOLIO GROUP



250-884-9753
matt@propermeasure.com
www.propermeasure.com



NORTH



UNIT 704 - 325 MAITLAND STREET MAY 8, 2025 PREPARED FOR THE EXCLUSIVE USE OF CLOVER RESIDENTIAL PLANS MAY NOT BE 100% ACCURATE, IF CRITICAL BUYER TO VERIFY.		
FLOOR	AREA (SQ. FT.)	
	FINISHED	BALCONY
MAIN	490	24
UPPER	518	-
TOTAL	1008	24