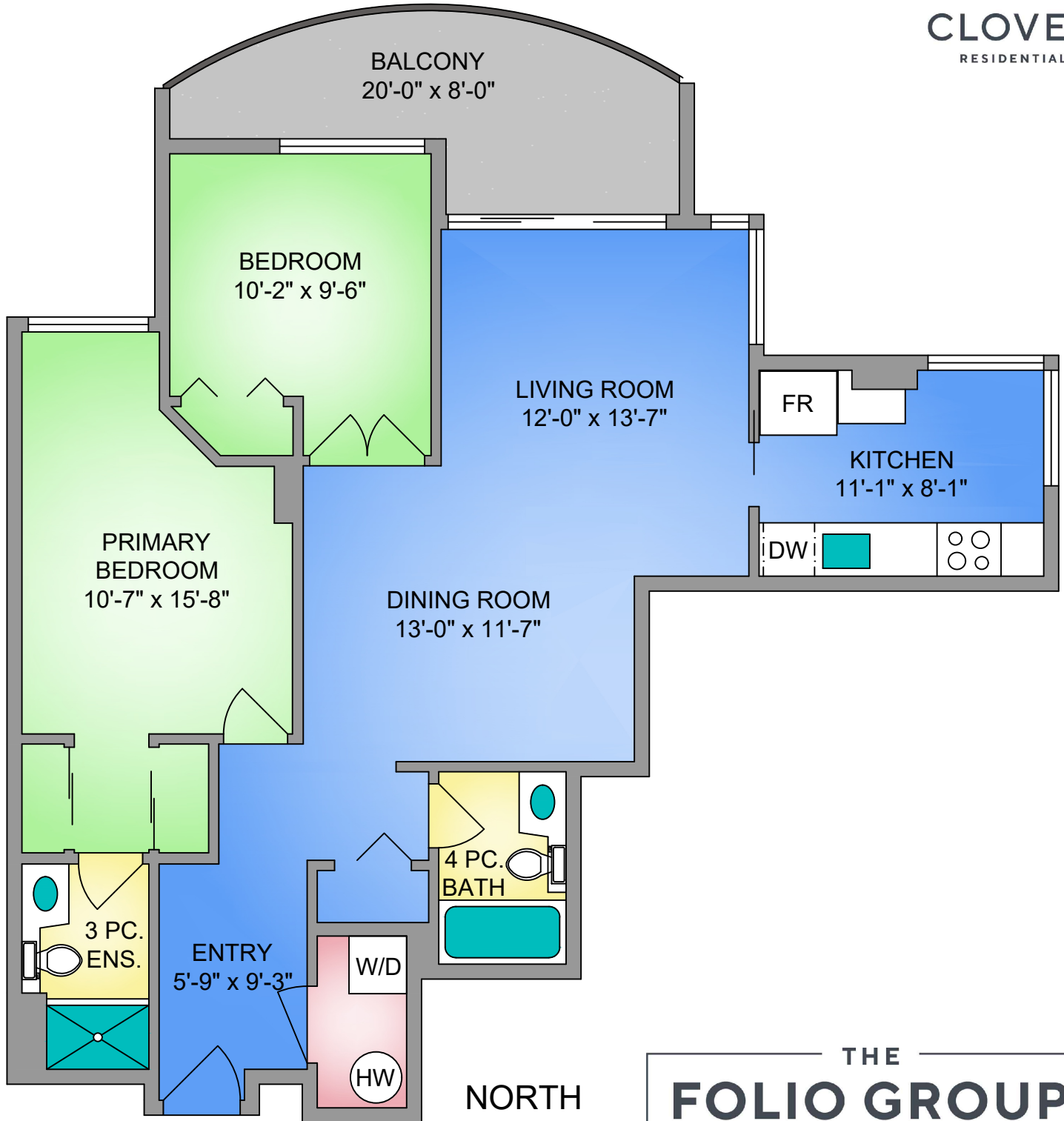


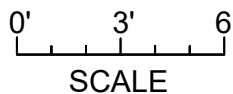
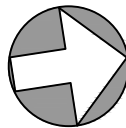
UNIT 803 - 1010 VIEW STREET
948 SQ. FT.
 7'-10" CEILING HEIGHT



CLOVER
 RESIDENTIAL



NORTH



THE
FOLIO GROUP

UNIT 803 - 1010 VIEW STREET

APRIL 10, 2025

PREPARED FOR THE EXCLUSIVE USE OF CLOVER RESIDENTIAL
 PLANS MAY NOT BE 100% ACCURATE, IF CRITICAL BUYER TO VERIFY.

FLOOR	AREA (SQ. FT.)	
	FINISHED	BALCONY
EIGHTH	948	108



250-884-9753
 matt@propermeasure.com
 www.propermeasure.com