

FOR SALE



CLOVER  
RESIDENTIAL

THE  
FOLIO  
GROUP

PRESENTS

803-1010 View St





DISCOVER

# Downtown



Situated along Victoria's picturesque Inner Harbour, Downtown is a vibrant neighbourhood ideal for shopping, dining, and leisurely spending your day and night. Bike or walk, you're always near the waterfront as well as neighbouring urban villages.





**\$585,000**

**Listed by:**

Ole Schmidt, Hannah Hayworth &  
William Johnson

**Neighbourhood:** Downtown

**Bedrooms:** 2

**Bathrooms:** 2

**Living Area:** 948 Sq.Ft.

**Year Built:** 1991

**Taxes:** \$2,616 (Tax Year: 2024)

**Strata Fee:** \$561.04

**MLS:** 994511

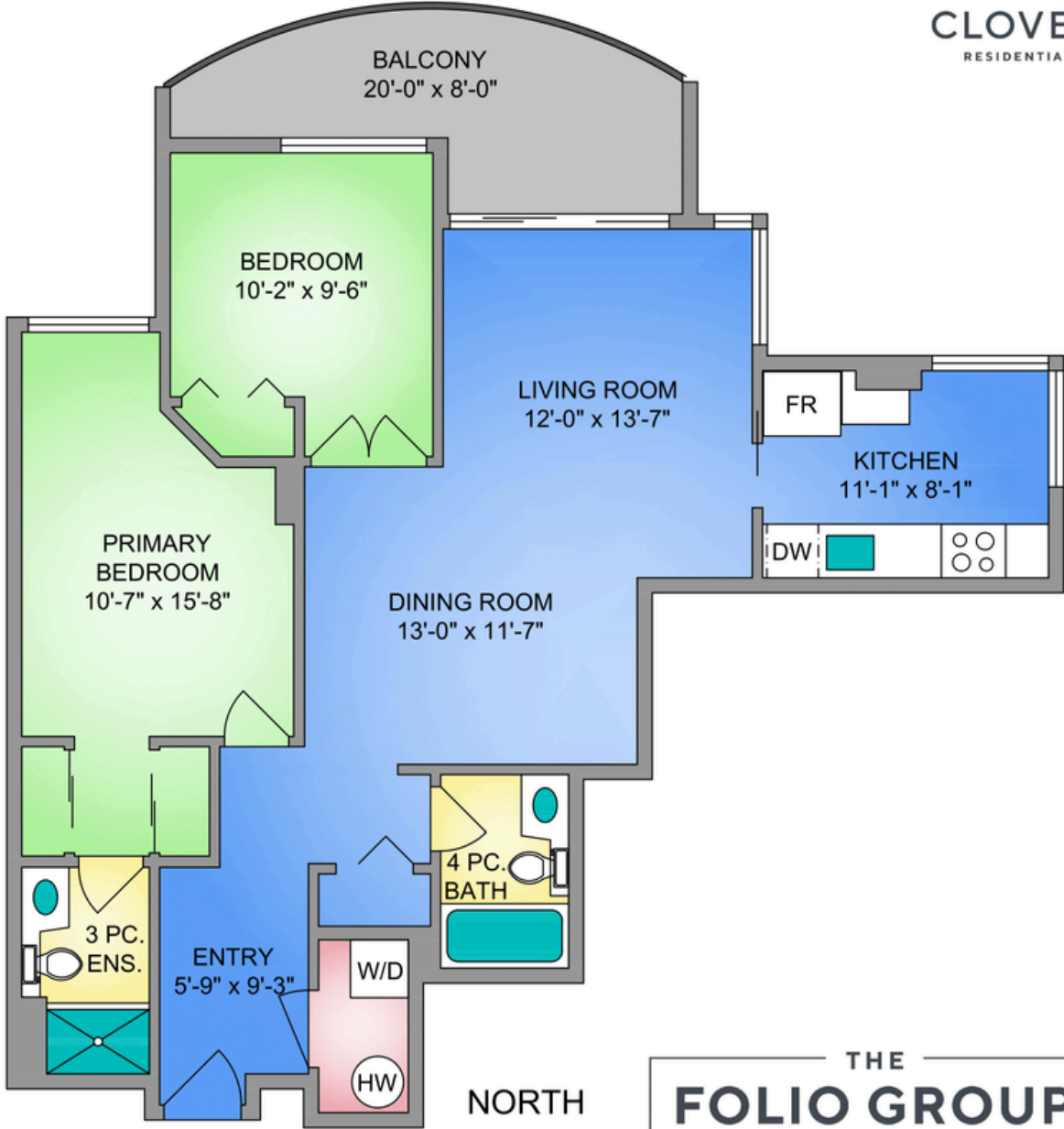
## 803-1010 View St

Located on the 8th floor of Regents Park in the heart of Harris Green Village, this bright northwest-facing 2 bed, 2 bath condo offers a smart layout with a generous private balcony and sweeping city views.

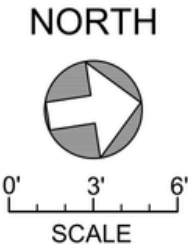
Enjoy an open-concept living and dining space, a versatile second bedroom with French doors ideal as an office or den, and a spacious primary suite with walk-through closet and ensuite. The eat-in kitchen is lined with floor-to-ceiling windows, capturing vibrant downtown energy. Insuite laundry is included for convenience.

This well-managed, steel and concrete building is pet friendly and includes secure parking, storage, a fitness centre, hot tub, and on-site caretaker—all just steps to shops, dining, and the waterfront.

UNIT 803 - 1010 VIEW STREET  
948 SQ. FT.  
7'-10" CEILING HEIGHT



250-884-9753  
matt@propermeasure.com  
www.propermeasure.com



THE FOLIO GROUP		
UNIT 803 - 1010 VIEW STREET		
APRIL 10, 2025		
PREPARED FOR THE EXCLUSIVE USE OF CLOVER RESIDENTIAL		
PLANS MAY NOT BE 100% ACCURATE. IF CRITICAL BUYER TO VERIFY.		
FLOOR	AREA (SQ. FT.)	
	FINISHED	BALCONY
EIGHTH	948	108





## GET TO KNOW US



**Ole Schmidt**  
MANAGING BROKER,  
CO-OWNER

**William Johnson**  
REALTOR®

**Hannah Hayworth**  
REALTOR®

### EMAIL

Folio@CloverResidential.com

### TEXT/CALL

250-256-8371

**CLOVERRESIDENTIAL.COM**

Clover Residential Ltd. | 394 Moss Street, Victoria, BC, V8V 4N1

THE  
**FOLIO GROUP**





CLOVER  
RESIDENTIAL