

FOR SALE



CLOVER
RESIDENTIAL

THE
FOLIO
GROUP

PRESENTS

803-1010 View St

DISCOVER

Downtown



Situated along Victoria's picturesque Inner Harbour, Downtown is a vibrant neighbourhood ideal for shopping, dining, and leisurely spending your day and night. Bike or walk, you're always near the waterfront as well as neighbouring urban villages.



\$585,000

Listed by:

Ole Schmidt, Hannah Hayworth & William Johnson

Neighbourhood: Downtown

Bedrooms: 2

Bathrooms: 2

Living Area: 948 Sq.Ft.

Year Built: 1991

Taxes: \$2,616 (Tax Year: 2024)

Strata Fee: \$561.04

MLS: 994511

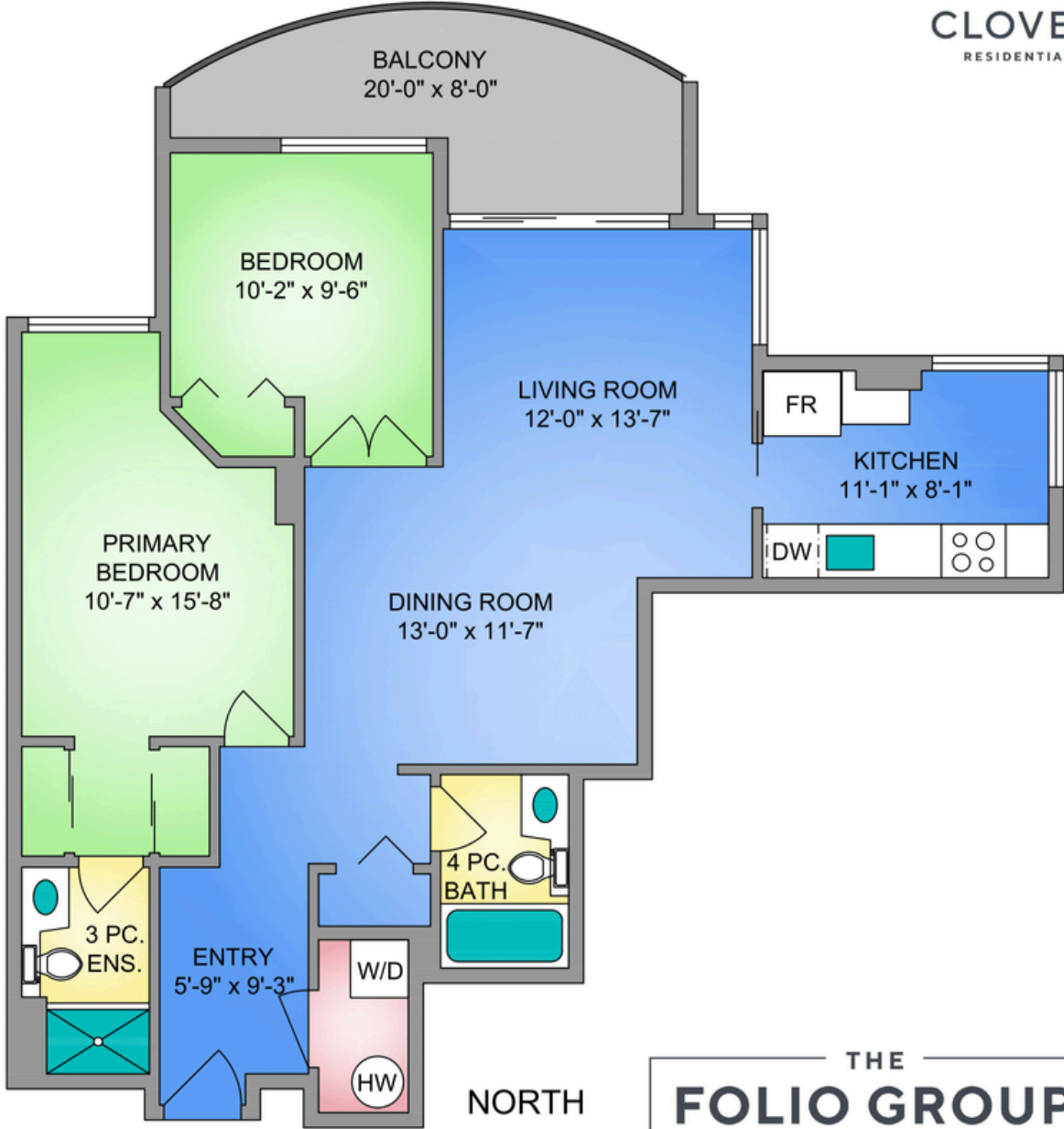
803-1010 View St

Located on the 8th floor of Regents Park in the heart of Harris Green Village, this bright, mostly west facing, 2 bed, 2 bath condo offers a smart layout with a generous private balcony and sweeping city views.

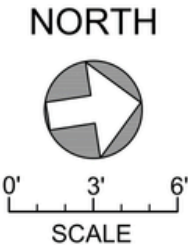
Enjoy an open-concept living and dining space, a versatile second bedroom with French doors ideal as an office or den, and a spacious primary suite with walk-through closet and ensuite. The eat-in kitchen is lined with floor-to-ceiling windows, showcasing a lovely view corridor. Insuite laundry is included for convenience.

This well-managed, steel and concrete building is pet friendly and includes secure parking, storage, a fitness centre, hot tub, and on-site caretaker—all just steps to shops, dining, and the waterfront.

UNIT 803 - 1010 VIEW STREET
948 SQ. FT.
7'-10" CEILING HEIGHT



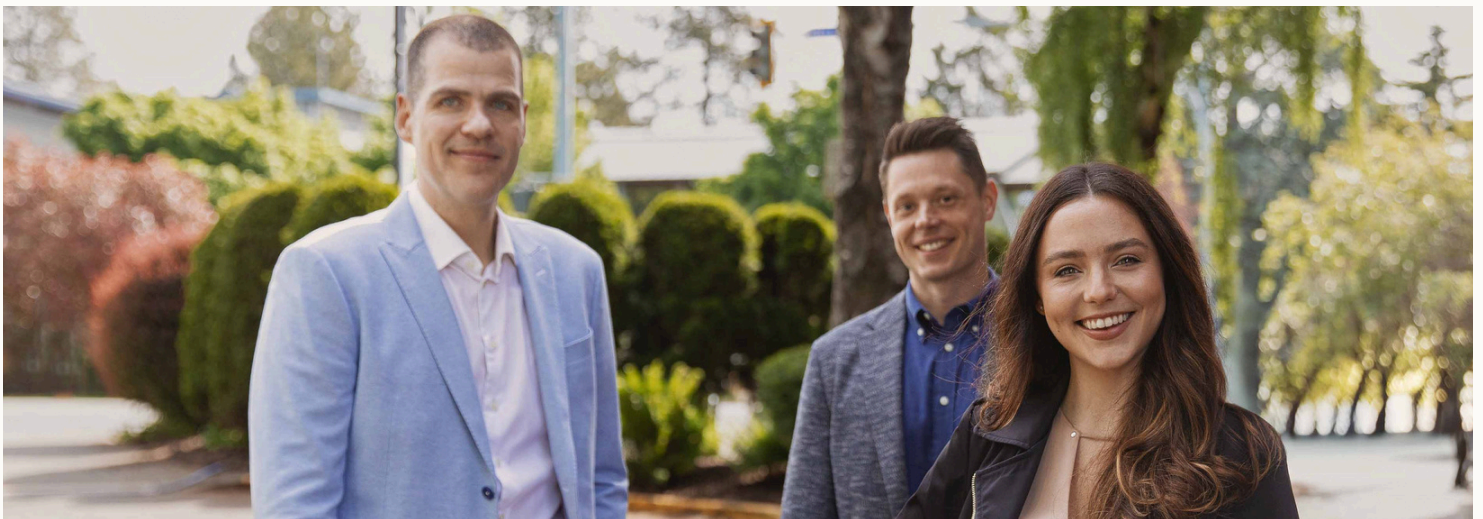
250-884-9753
matt@propermeasure.com
www.propermeasure.com



THE FOLIO GROUP		
UNIT 803 - 1010 VIEW STREET		
APRIL 10, 2025		
PREPARED FOR THE EXCLUSIVE USE OF CLOVER RESIDENTIAL		
PLANS MAY NOT BE 100% ACCURATE. IF CRITICAL BUYER TO VERIFY.		
FLOOR	AREA (SQ. FT.)	
	FINISHED	BALCONY
EIGHTH	948	108



GET TO KNOW US



Ole Schmidt
MANAGING BROKER,
CO-OWNER

William Johnson
REALTOR®

Hannah Hayworth
REALTOR®

EMAIL

Folio@CloverResidential.com

TEXT/CALL

250-256-8371

[CLOVERRESIDENTIAL.COM](https://cloverresidential.com)

Clover Residential Ltd. | 394 Moss Street, Victoria, BC, V8V 4N1

THE
FOLIO GROUP



CLOVER
RESIDENTIAL