

FOR SALE



CLOVER
RESIDENTIAL

THE
FOLIO
GROUP

PRESENTS

307-1012 Pakington St



DISCOVER

Fairfield



Equally hip and historic, Fairfield is one of Victoria's most desirable neighbourhoods. Park your car and start exploring—you're within walking distance of everything.



\$595,000

Listed by: Ole Schmidt, Hannah Hayworth & William Johnson

Neighbourhood: Fairfield

Bedrooms: 2

Bathrooms: 1.5

Living Area: 1055 Sq.Ft.

Year Built: 1972

Taxes: \$2,910 (Tax Year: 2024)

Strata: \$635.76

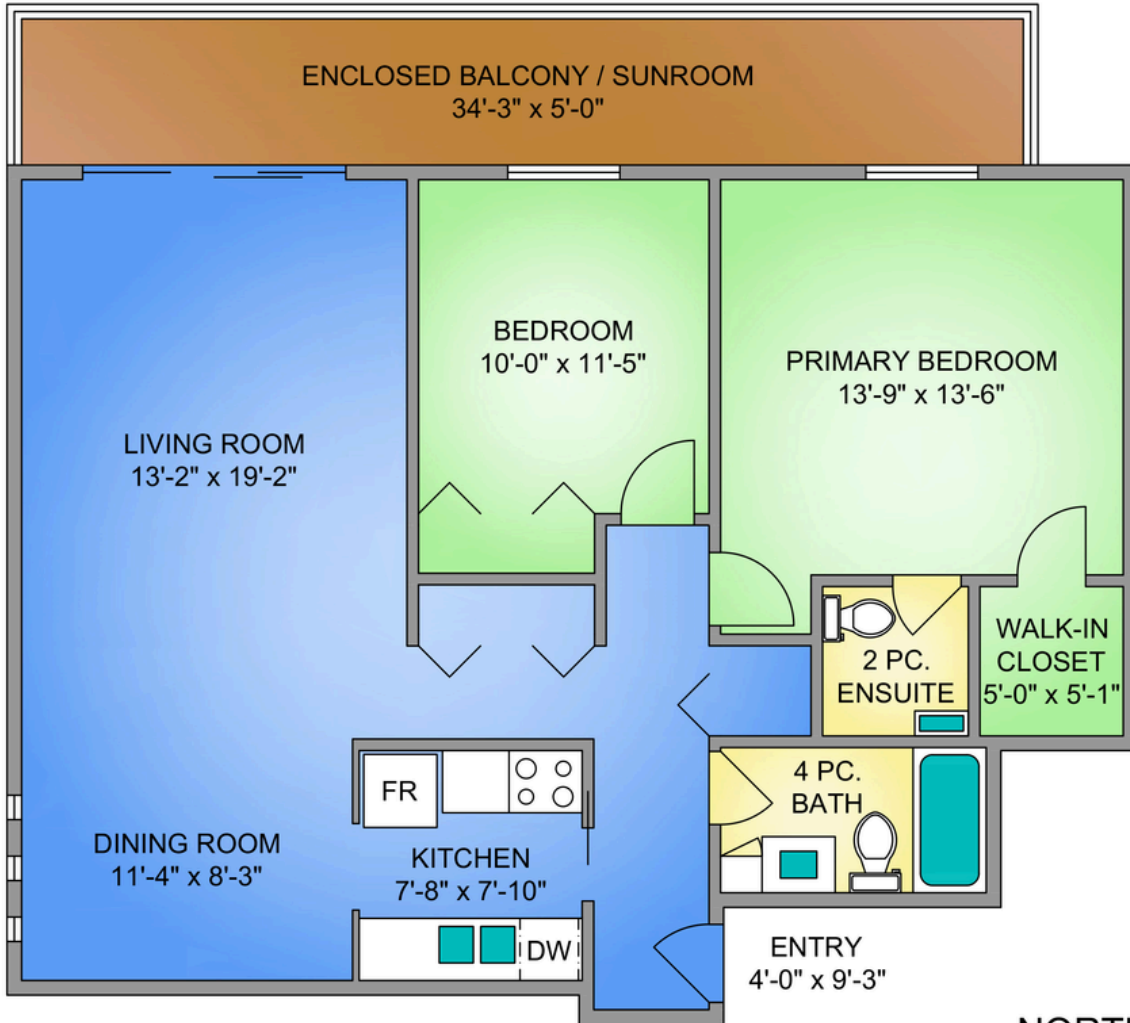
MLS: 992407

307-1012 Pakington St

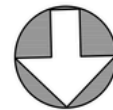
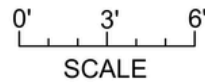
Perched on the southeast corner looking towards the Olympic Mountain Range, an expansive and unbeatable Fairfield viewpoint meets quaint low rise living in this bright and spacious unit. Located in one of Victoria's most walkable and vibrant neighbourhoods, this 2 bed, 2 bath unit features over 1000 sq ft of living space and has been tastefully updated throughout. With fresh paint, new light fixtures, and crown moulding added, you'll appreciate the attention to detail. The primary bedroom comfortably fits a king size bed and has the added convenience of a walk in closet and 2pc ensuite. Enjoy year-round use of the massive, sun-drenched enclosed balcony—perfect as a reading nook, art space, or home office. Off street parking included, plus walk in separate storage right outside the unit, and an additional locker. Amenities include ample bike storage, a workshop and common room. Just a short stroll to cafes, shops, beaches, and parks—and minutes from the Inner Harbour, transit, and downtown!

UNIT 307 - 1012 PAKINGTON STREET

1055 SQ. FT.
8' CEILING HEIGHT



NORTH



THE FOLIO GROUP



250-884-9753
matt@propermeasure.com
www.propermeasure.com



UNIT 307 - 1012 PAKINGTON STREET		
MARCH 31, 2025		
PREPARED FOR THE EXCLUSIVE USE OF CLOVER RESIDENTIAL		
PLANS MAY NOT BE 100% ACCURATE. IF CRITICAL BUYER TO VERIFY.		
FLOOR	AREA (SQ. FT.)	
	FINISHED	BALCONY
THIRD	1055	171



GET TO KNOW US



Ole Schmidt
MANAGING BROKER,
CO-OWNER

William Johnson
REALTOR®,
SALES TEAM

Hannah Hayworth
REALTOR®,
SALES TEAM

EMAIL

Folio@CloverResidential.com

TEXT/CALL

250-256-8371



CLOVER
RESIDENTIAL