

FOR SALE



CLOVER
RESIDENTIAL

THE
FOLIO
GROUP

PRESENTS

904-835 View St



DISCOVER

Downtown



Situated along Victoria's picturesque Inner Harbour, Downtown is a vibrant neighbourhood ideal for shopping, dining, and leisurely spending your day and night. Bike or walk, you're always near the waterfront as well as neighbouring urban villages.



\$399,900

Listed by:

Ole Schmidt, Hannah Hayworth &
William Johnson

Neighbourhood: Downtown

Bedrooms: 1

Bathrooms: 1

Living Area: 551 Sq.Ft. (strata plan)

Year Built: 1995

Taxes: \$2,028 (Tax Year: 2024)

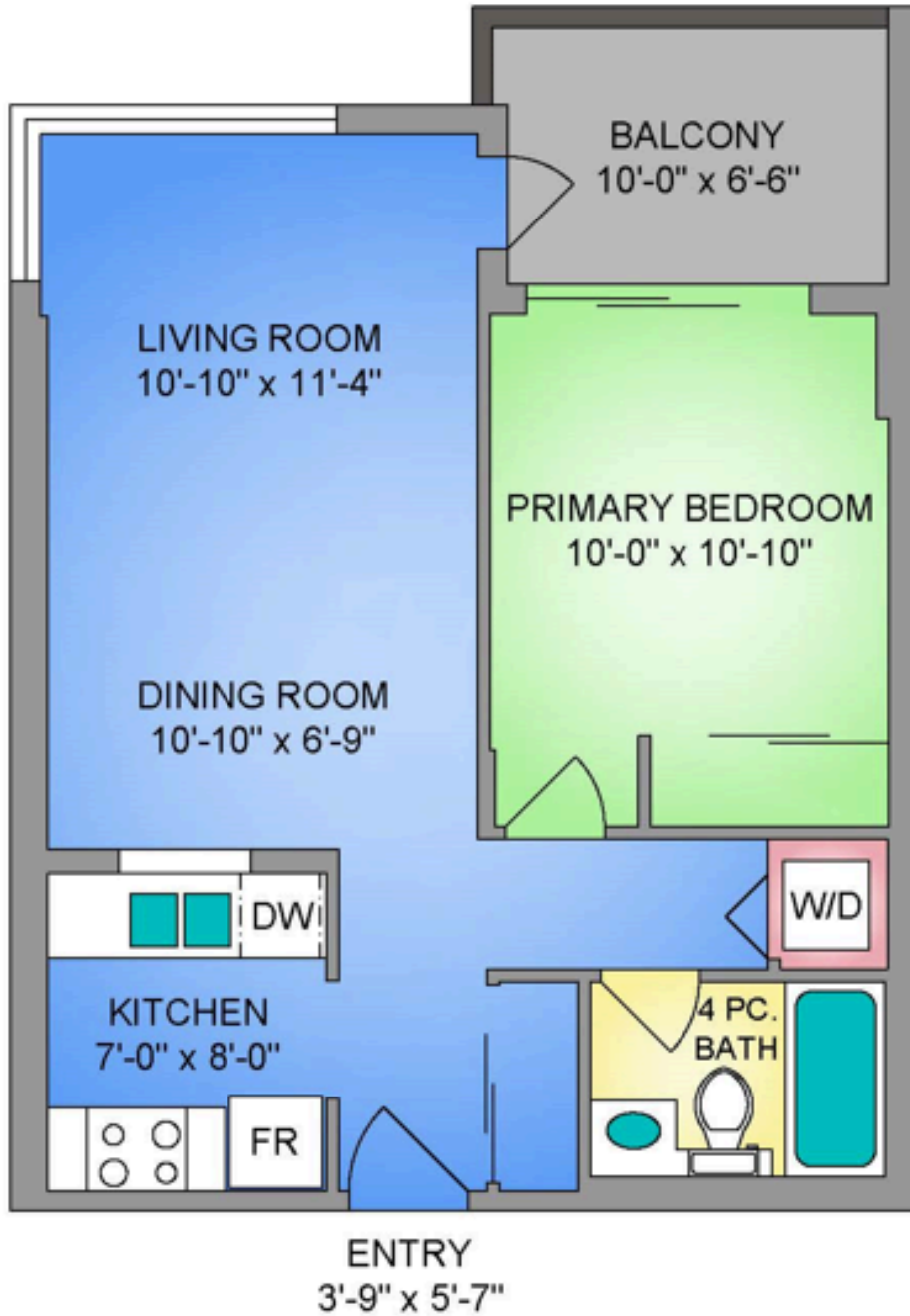
Strata Fee: \$312.66

MLS: 989771

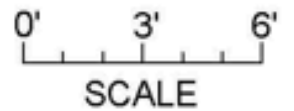
904-835 View St

Welcome to this bright and inviting 1-bedroom, 1-bathroom suite located on the 9th floor of The Metropolitan in the heart of Downtown Victoria. This home features floor to ceiling windows and a south-facing balcony with expansive views of the city, mountains, and glimpses of the ocean. The functional floorplan provides ample space in the living area and primary bedroom, with convenient access to your outdoor space from both. With a bright interior, abundant natural light, insuite laundry, and a south-facing main outlook, this suite offers both comfort and convenience. Parking and storage are included, along with bike storage for added practicality, in a pet-friendly building that perfectly complements the vibrant urban setting. Live steps away from all your favourite amenities, including boutique shopping, cafes, daily essentials, and an abundance of entertainment options.

UNIT 904 - 835 VIEW STREET
559 SQ. FT.
8' CEILING HEIGHT



NORTH





GET TO KNOW US



Ole Schmidt
MANAGING BROKER,
CO-OWNER

William Johnson
REALTOR®

Hannah Hayworth
REALTOR®

EMAIL

Folio@CloverResidential.com

TEXT/CALL

250-256-8371



CLOVER
RESIDENTIAL