

FOR SALE



CLOVER

RESIDENTIAL

THE
FOLIO
GROUP

PRESENTS

302-280 Island Hwy



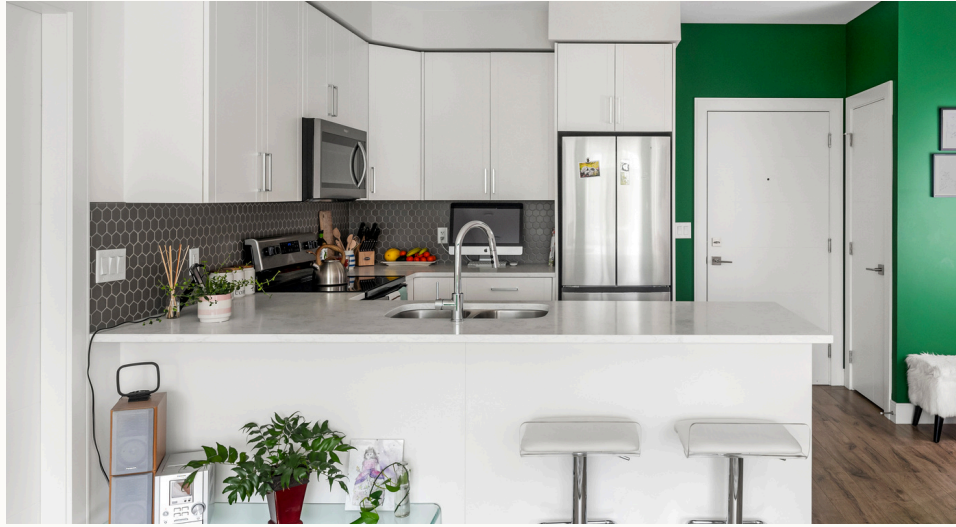


DISCOVER

View Royal



Outdoor enthusiasts interested in hiking, running, swimming, and canoeing are attracted to the area, which boasts the expansive Thetis Lake Regional Park. Conveniently located and ideal for families seeking a more suburban lifestyle, View Royal offers quieter living with nature right at your doorstep.



\$543,210

Listed by:
Hannah Hayworth

Neighbourhood: View Royal

Bedrooms: 2

Bathrooms: 2

Living Area: 783 Sq.Ft. (strata plan)

Year Built: 2019

Taxes: \$2063.36 (Tax Year: 2024)

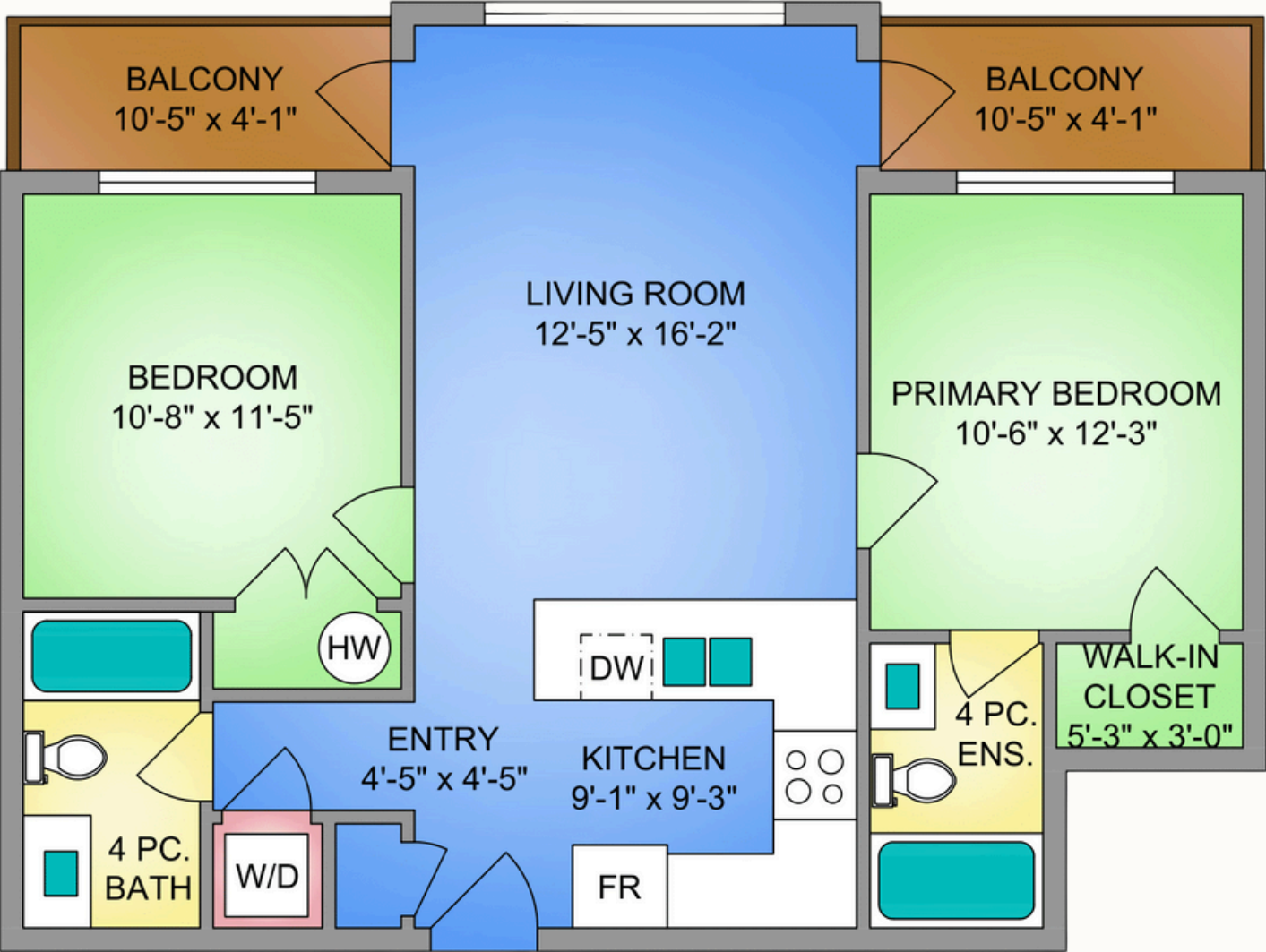
Strata Fee: \$471.10

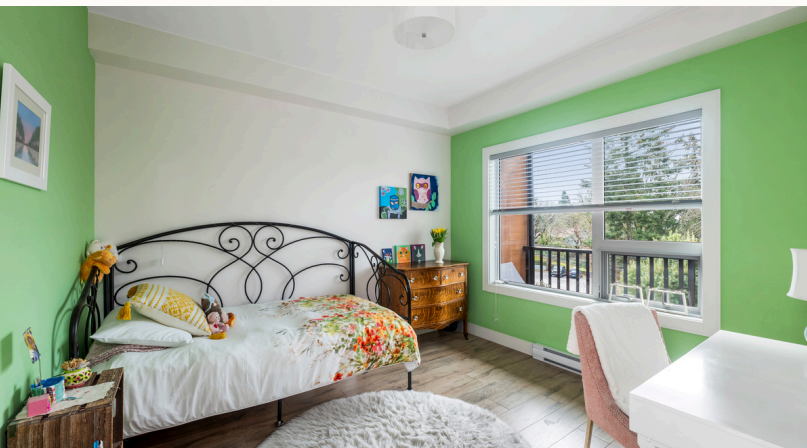
MLS: 997285

302-280 Island Hwy

Welcome to Maija London, a sought-after 2019-built complex just steps from the beach! This southwest-facing 2-bed, 2-bath condo offers serene treed views with glimmers of the ocean and a well designed layout featuring separated bedrooms and two balconies. Soak in stunning sunsets and enjoy year-round BBQs! Flooded with natural light, this stylish unit boasts high ceilings and engineered wood flooring throughout, plus heated bathroom tile. The modern kitchen is complete with full-height cabinetry, quartz counters with barstool seating, and sleek stainless appliances. Included is insuite laundry, underground parking, and separate storage. This well-managed building, still under 10-year warranty, welcomes pets with no size restrictions and offers bike storage +more. Centrally located near Victoria General Hospital, you'll have easy access to dog-friendly parks, the Portage Inlet, E&N Trail, cafes, childcare, and all essentials. Plus, Downtown Victoria and UVic are just a short drive away.

FLOOR PLANS





GET TO KNOW US



Hannah Hayworth

REALTOR®

Hannah@cloverresidential.com

CLOVERRESIDENTIAL.COM

Clover Residential Ltd. | 394 Moss Street, Victoria, BC, V8V 4N1

THE
FOLIO GROUP



CLOVER
RESIDENTIAL