

FOR SALE



CLOVER  
RESIDENTIAL

221

THE  
FOLIO  
GROUP

PRESENTS

221 Michigan St



DISCOVER

# James Bay



Tucked behind the Legislature Buildings and the Inner Harbour, James Bay is one of Victoria's oldest neighbourhoods, with many original turn-of-the-century Victorian homes.



**\$819,000**

**Listed by:**

Ole Schmidt, Hannah Hayworth & William Johnson

**Neighbourhood:** James Bay

**Bedrooms:** 2

**Bathrooms:** 1

**Living Area:** 1362 Sq.Ft. (strata plan)

**Lot Size:** 3,325 Sq.Ft. (strata plan)

**Year Built:** 1951

**Taxes:** \$4,141 (Tax Year: 2024)

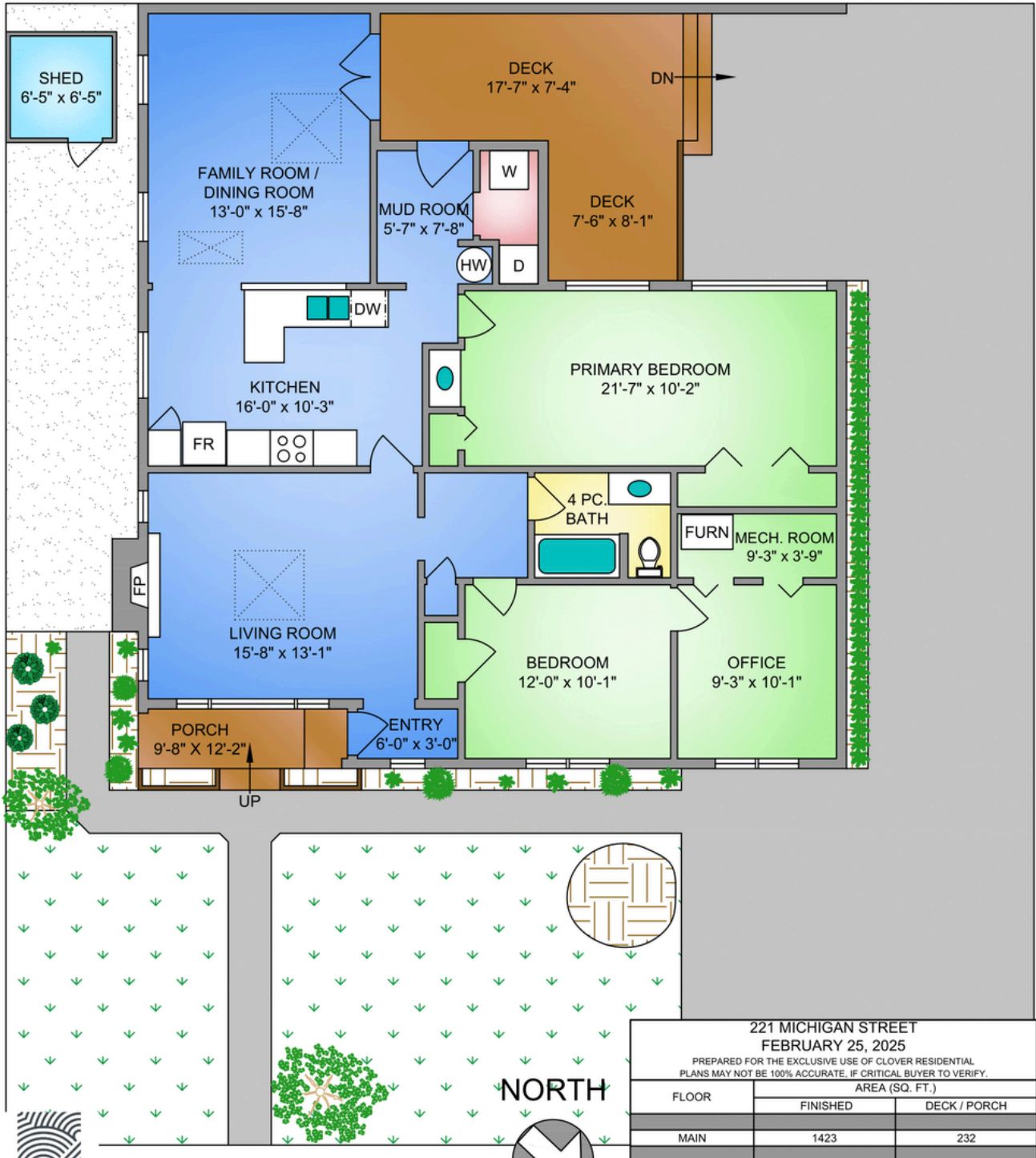
**MLS:** 988803

## 221 Michigan St

Don't miss this chance to secure the perfect starter home in one of Victoria's prime core neighbourhoods—offering plenty of space to grow, endless potential to make it your own, and an unbeatable price! Welcome to this bright and spacious front-half duplex, offering one level living with only a small connecting wall to the back dwelling, and perfectly nestled in the heart of James Bay. Thoughtfully designed, this home boasts a functional floor plan with large principal rooms, timeless original wood flooring, and an abundance of natural light throughout with 4 skylights. Find the perfect retreat for morning coffee or evening relaxation with a back deck off of the family room and your own front yard. With driveway parking and no strata fees, this is a rare find in a highly sought-after neighbourhood. Located just moments from downtown, the waterfront, and James Bay Village, you'll enjoy easy access to parks, cafes, shops, and all the best amenities this vibrant community has to offer.

# FLOOR PLANS

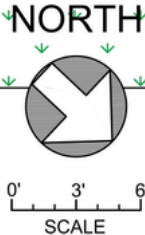
## 221 MICHIGAN STREET 1423 SQ. FT. 8'-0" CEILING HEIGHT



221 MICHIGAN STREET FEBRUARY 25, 2025 PREPARED FOR THE EXCLUSIVE USE OF CLOVER RESIDENTIAL PLANS MAY NOT BE 100% ACCURATE. IF CRITICAL BUYER TO VERIFY.		
FLOOR	AREA (SQ. FT.)	
	FINISHED	DECK / PORCH
MAIN	1423	232



THE  
**FOLIO GROUP**



250-884-9753  
matt@propermeasure.com  
www.propermeasure.com

THE  
**FOLIO GROUP**



## GET TO KNOW US

---



Ole Schmidt  
MANAGING BROKER,  
CO-OWNER

William Johnson  
REALTOR®

Hannah Hayworth  
REALTOR®

### EMAIL

Folio@CloverResidential.com

### TEXT/CALL

250-256-8371

[CLOVERRESIDENTIAL.COM](https://www.cloverresidential.com)

Clover Residential Ltd. | 394 Moss Street, Victoria, BC, V8V 4N1

THE  
**FOLIO GROUP**



**CLOVER**  
RESIDENTIAL