

FOR SALE

THE
FOLIO
GROUP

PRESENTS

101-110 Presley Pl



CLOVER
RESIDENTIAL



DISCOVER

View Royal



Outdoor enthusiasts interested in hiking, running, swimming, and canoeing are attracted to the area, which boasts the expansive Thetis Lake Regional Park. Conveniently located and ideal for families seeking a more suburban lifestyle, View Royal offers quieter living with nature right at your doorstep.



\$479,000

Listed by:

Ole Schmidt, Hannah Hayworth & William Johnson

Neighbourhood: Royal Bay

Bedrooms: 1 + den

Bathrooms: 1

Living Area: 842 Sq.Ft.

Year Built: 2019

Taxes: \$1,838 (Tax Year: 2023)

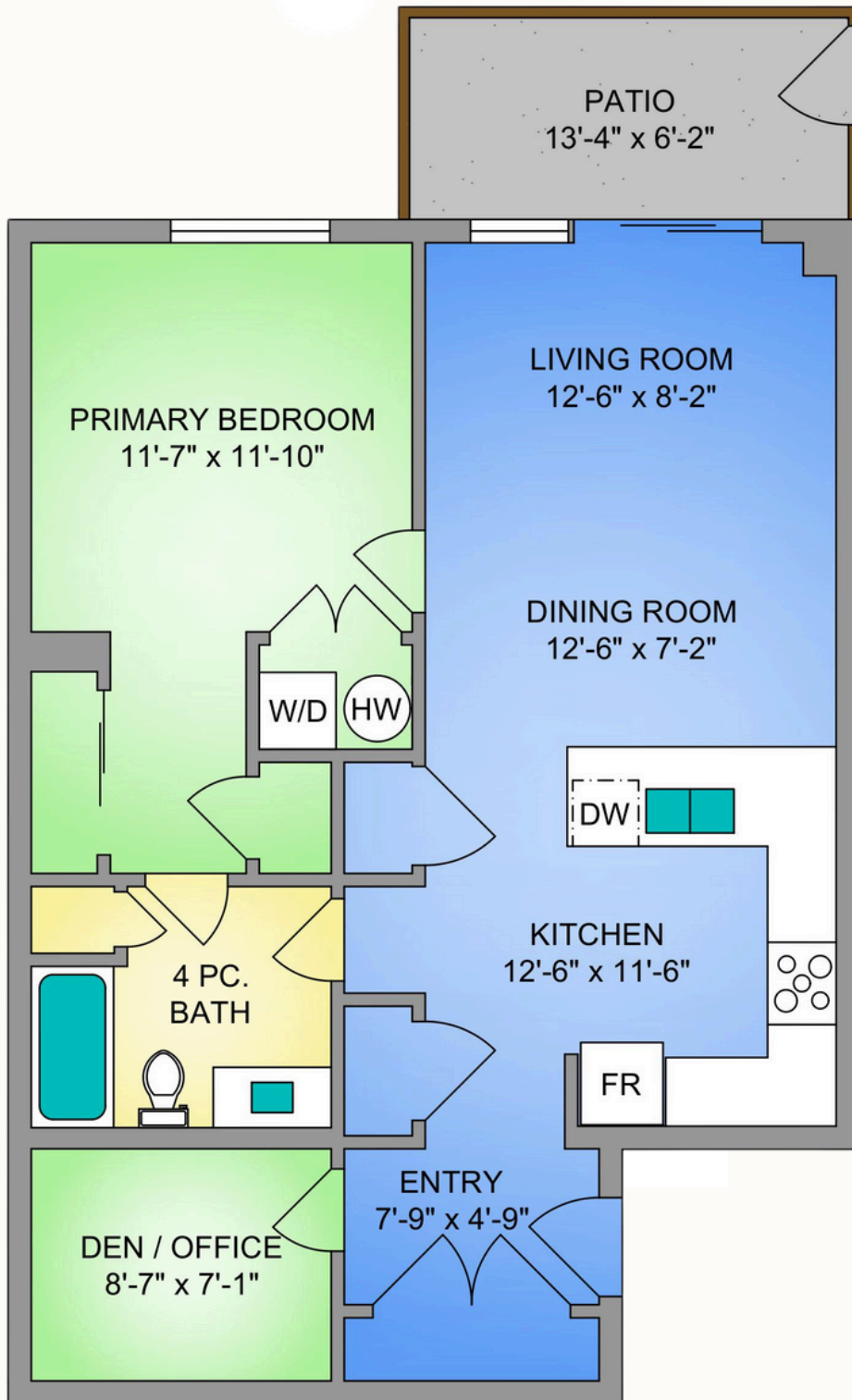
Strata Fee: \$264

MLS: 979027

101-110 Presley Pl

Experience modern West Coast living in this 1-bedroom + den, 1-bath condo in vibrant View Royal, ideal for active lifestyles. Located just steps from the scenic Galloping Goose Trail and moments from beautiful Thetis Lake, this home offers a seamless blend of style and functionality, perfect for nature lovers. Inside, enjoy a bright, open kitchen complete with stainless steel appliances and sleek vinyl plank flooring, complemented by high ceilings that enhance the spacious feel. The bedroom features a walk-through closet leading to a cheater ensuite, while the den, equipped with a Murphy bed and desk, provides an ideal setup for a home office or guest suite. This condo also includes in-suite laundry, a secure storage locker, underground parking, bike storage, and a EV charger for electric vehicles—thoughtful extras for today's lifestyle. Unwind on the south-facing patio, your private spot for morning coffee or evening relaxation. Conveniently close to essential shopping and dining, with quick access to Downtown Victoria's entertainment and culture, this home provides the perfect balance of nature and modern living.

FLOOR PLANS





GET TO KNOW US



Ole Schmidt
MANAGING BROKER,
CO-OWNER

William Johnson
REALTOR®

Hannah Hayworth
REALTOR®

EMAIL

Folio@CloverResidential.com

TEXT/CALL

250-256-8371

[CLOVERRESIDENTIAL.COM](https://www.cloverresidential.com)

Clover Residential Ltd. | 394 Moss Street, Victoria, BC, V8V 4N1

THE
FOLIO GROUP

THE
FOLIO
GROUP



CLOVER
RESIDENTIAL