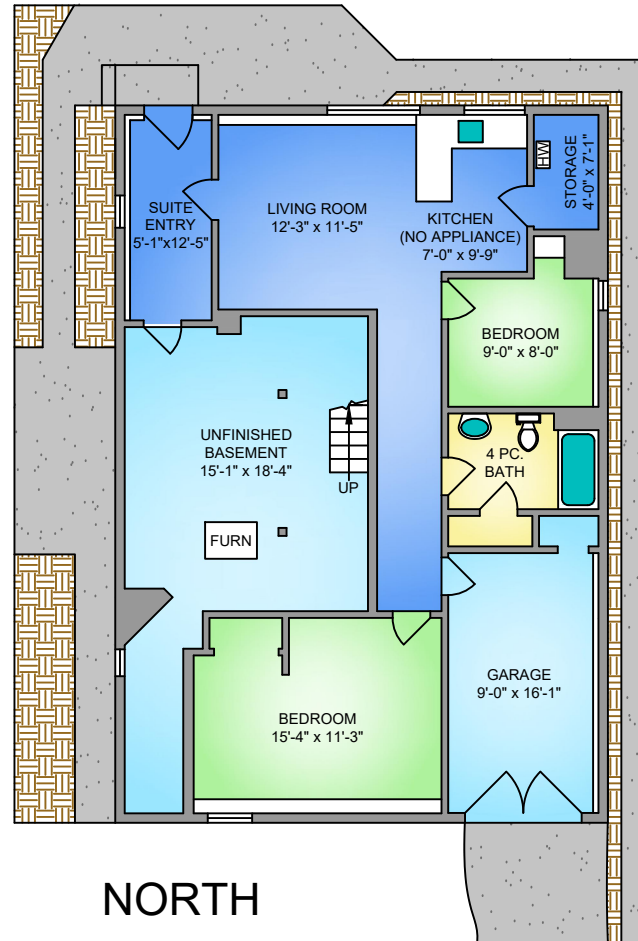
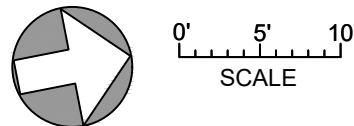


**LOWER FLOOR**  
822 SQ. FT.  
6'-10" CEILING HEIGHT

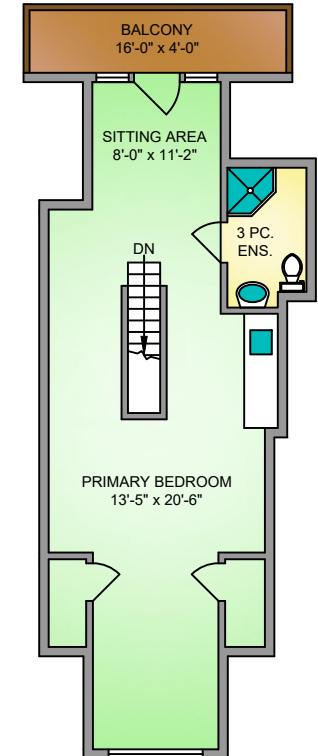


NORTH



THE  
**FOLIO GROUP**

**UPPER FLOOR**  
578 SQ. FT.  
7'-6" CEILING HEIGHT



624 CORNWALL STREET  
OCTOBER 30, 2024  
PREPARED FOR THE EXCLUSIVE USE OF CLOVER RESIDENTIAL LTD  
PLANS MAY NOT BE 100% ACCURATE, IF CRITICAL BUYER TO VERIFY.

FLOOR	AREA (SQ. FT.)			
	FINISHED	UNFINISHED	GARAGE	PORCH / BALCONY
MAIN	1326	-	-	59
UPPER	578	-	-	62
LOWER	822	355	181	-
<b>TOTAL</b>	<b>2726</b>	<b>355</b>	<b>181</b>	<b>121</b>