

FOR SALE

THE
FOLIO
GROUP



CLOVER
RESIDENTIAL

PRESENTS

1362 Dallas Road



DISCOVER

Fairfield



Equally hip and historic, Fairfield is one of Victoria's most desirable neighbourhoods. Park your car and start exploring—you're within walking distance of everything.



\$2,425,000

Listed by:

Ole Schmidt, Hannah Hayworth &
William Johnson

Neighbourhood: Fairfield

Bedrooms: 7

Bathrooms: 5

Living Area: 4,675 Sq.Ft.

Lot Size: 4,686 Sq.Ft. (Tax Detail)

Year Built: 1906

Taxes: \$11,593 (Tax Year: 2023)

MLS: 976421

1362 Dallas Road

Nestled along Dallas Rd with panoramic views of the oceanfront boardwalk and the Olympic Mountains, this exceptional property is a rare find, and suitable for investors and families alike. Featuring four thoughtfully crafted units - each offering unique charm and versatility, this 1906 character home was lifted and updated in 2011 and features a stunning owner's suite spanning two levels. The possibilities that await you are endless... multiple avenues of revenue generation, and for those who are a visionary, the option to seamlessly connect the two main level units for the ultimate enjoyment of timeless elegance and water views. The lower suites make no compromises with 9' ceilings, sleek contemporary design, and inviting SE-facing patios. Plus, individual storage lockers, gas on-demand HW, and four electric meters. Enjoy the prestige of being one of the select few owners on coveted Dallas Rd, all set against the stunning backdrop of one of Victoria's most sought-after neighbourhoods.

THE
FOLIO GROUP

FLOOR PLANS

THE
FOLIO GROUP



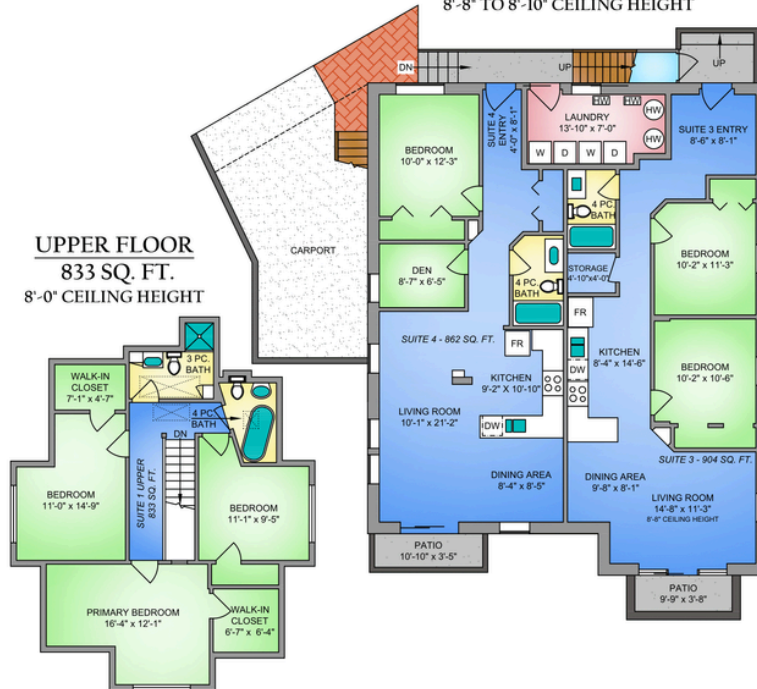
MAIN FLOOR
1958 SQ. FT.
9'-0" CEILING HEIGHT



LOWER FLOOR

1884 SQ. FT.
8'-8" TO 8'-10" CEILING HEIGHT

UPPER FLOOR
833 SQ. FT.
8'-0" CEILING HEIGHT



THE
FOLIO GROUP



GET TO KNOW US



Ole Schmidt
MANAGING BROKER,
CO-OWNER

William Johnson
REALTOR®

Hannah Hayworth
REALTOR®

EMAIL

Folio@CloverResidential.com

TEXT/CALL

250-256-8371

THE
FOLIO
GROUP



CLOVER
RESIDENTIAL