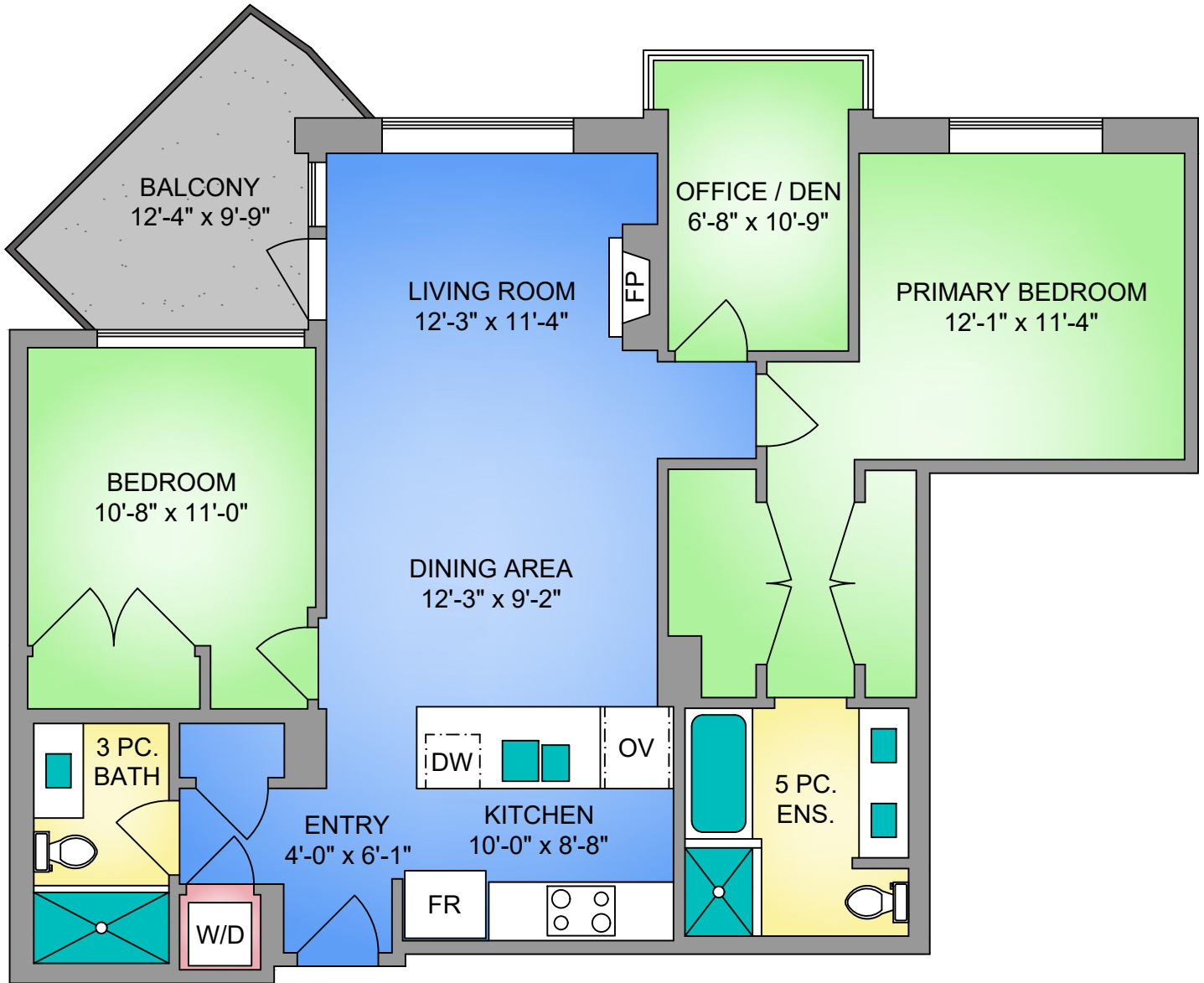


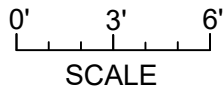
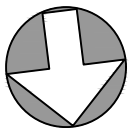
**UNIT 401 - 999 BURDETT AVENUE**

**1092 SQ. FT.**

**9'-0" CEILING HEIGHT**



**NORTH**



**CLOVER**  
RESIDENTIAL

UNIT 401 - 999 BURDETT AVENUE		
SEPTEMBER 16, 2024		
PREPARED FOR THE EXCLUSIVE USE OF THE FOLIO GROUP. PLANS MAY NOT BE 100% ACCURATE, IF CRITICAL BUYER TO VERIFY.		
FLOOR	AREA (SQ. FT.)	
	FINISHED	BALCONY
FOURTH	1092	85

THE  
**FOLIO GROUP**



250-884-9753  
matt@propermeasure.com  
www.propermeasure.com