

FOR SALE

THE
FOLIO
GROUP



CLOVER
RESIDENTIAL

PRESENTS

401-999 Burdett Ave



DISCOVER

Downtown



Situated along Victoria's picturesque Inner Harbour, Downtown is a vibrant neighbourhood ideal for shopping, dining, and leisurely spending your day and night. Bike or walk, you're always near the waterfront as well as neighbouring urban villages.



\$1,049,000

Listed by:

Ole Schmidt & Hannah Hayworth

Neighbourhood: Downtown

Bedrooms: 2 + den

Bathrooms: 2

Living Area: 1174 Sq.Ft.

Year Built: 2008

Taxes: \$4620 (Tax Year: 2023)

Monthly Fee: \$765 (2024)

MLS: 972043

401-999 Burdett Ave

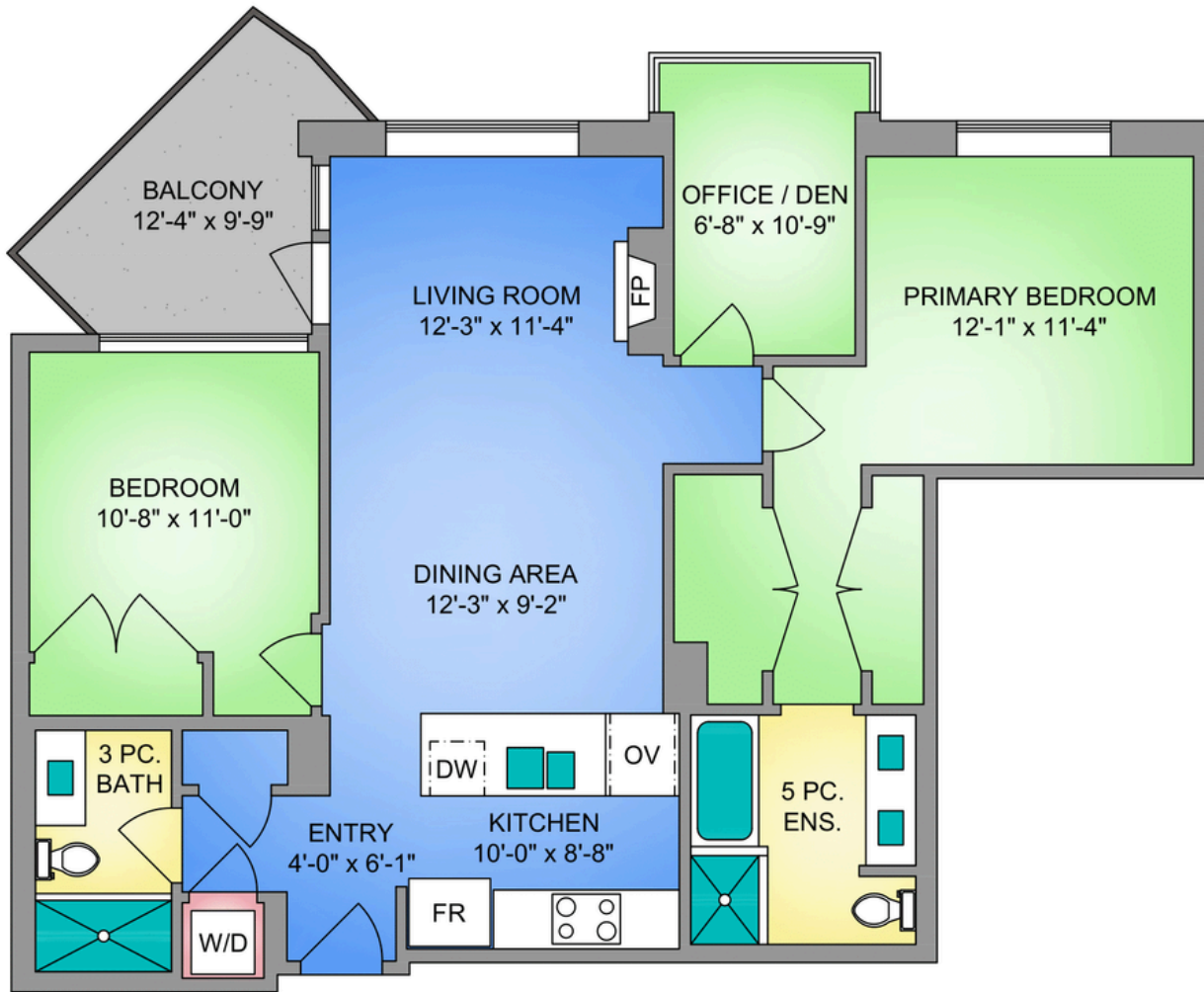
Welcome to the Chelsea, where luxury and convenience converge in this 2 bed + den, 2 bath condo on the sought-after Fairfield/Downtown border. This modern oasis features a bright updated kitchen, an electric fireplace, quartz countertops, top-of-the-line appliances, and a private balcony perfect for alfresco dining. The smart layout separates bedrooms for privacy, while the bright den provides a relaxing outlook from your potential home office space. Enjoy south-facing views of tranquil parterre-style gardens and a peaceful fountain, offering a serene escape in the heart of the city. This unit comes with two underground parking stalls, a storage locker, and access to premium amenities including bike storage, an exercise room, and a residents' lounge. With cafes, Beacon Hill Park, the ocean, Cook St Village, and Downtown all within walking distance, you'll experience the best of Victoria's vibrant lifestyle from this prestigious address. Experience style and comfort at the coveted Chelsea.

THE
FOLIO GROUP

UNIT 401 - 999 BURDETT AVENUE

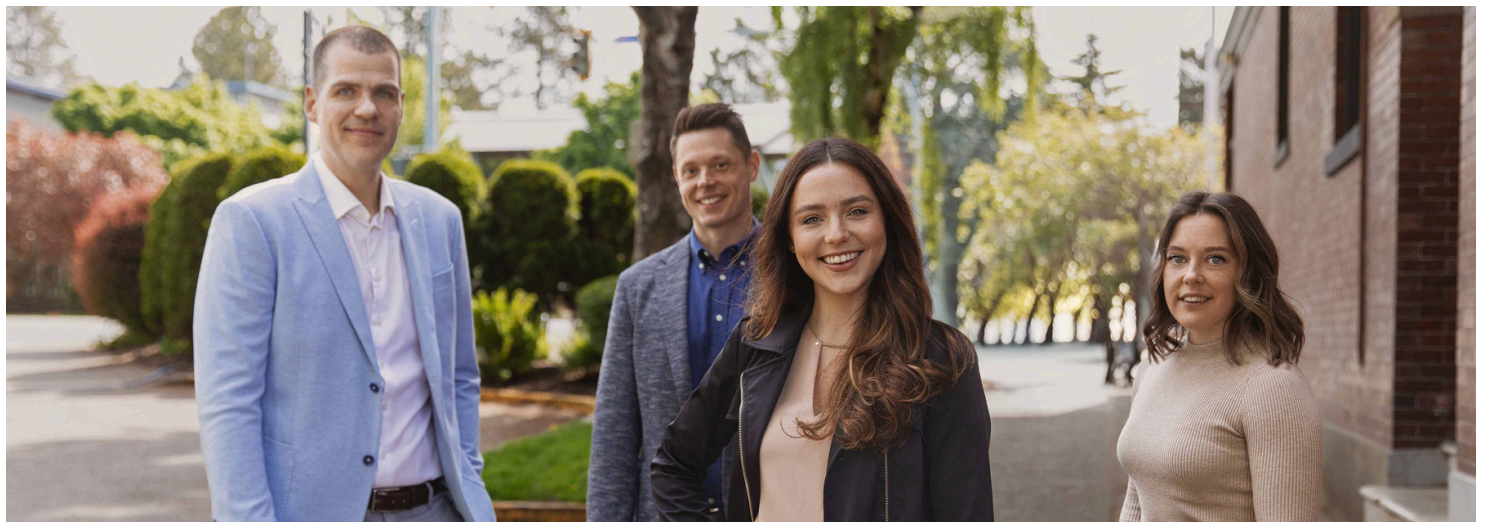
1092 SQ. FT.

9'-0" CEILING HEIGHT





GET TO KNOW US



Ole Schmidt
MANAGING BROKER,
CO-OWNER

William Johnson
REALTOR®

Hannah Hayworth
REALTOR®

Mikey Williams
REALTOR®

EMAIL

Folio@CloverResidential.com

TEXT/CALL

250-256-8371

THE
FOLIO
GROUP



CLOVER
RESIDENTIAL