

FOR SALE

THE
FOLIO
GROUP

PRESENTS

1980 Cromwell Rd



CLOVER
RESIDENTIAL



DISCOVER

Saanich East



Saanich East is a major residential area with many parks, golf courses, running and hiking trails, and limitless ways to leisurely spend your Sunday afternoons.



\$1,419,000

Listed by: Ole Schmidt, William Johnson & Hannah Hayworth

Neighbourhood: Saanich East

Bedrooms: 4

Bathrooms: 2

Living Area: 2,850 Sq.Ft.

Year Built: 1949

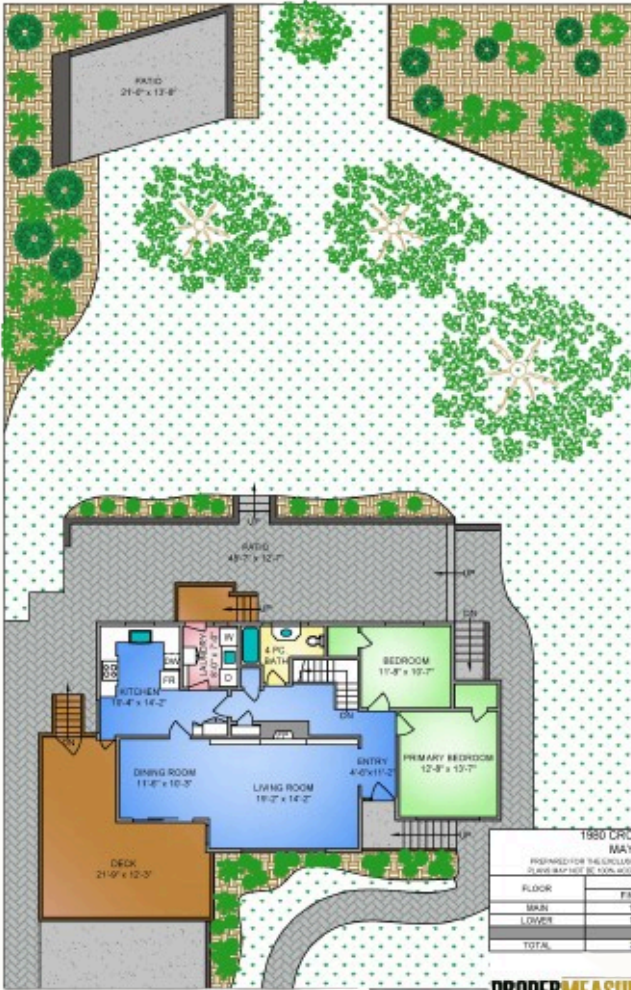
Taxes: \$5,555 (Tax Year: 2023)

MLS: 964867

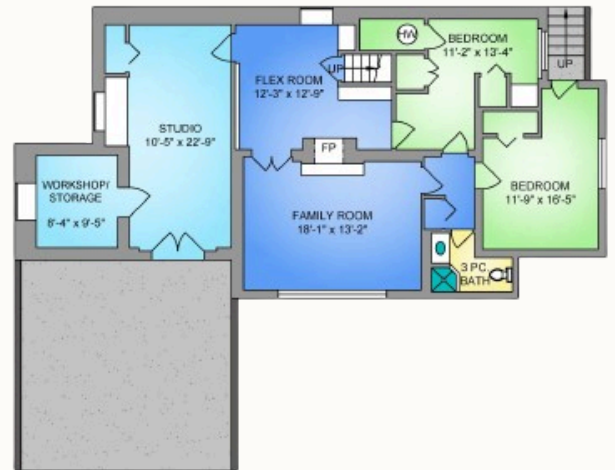
1980 Cromwell Rd

For the first time in 47 years, this hidden gem emerges onto the market, offering a haven of tranquility on Mt. Tolmie. Situated in a private & peaceful setting, this property spans almost 14,000 sq ft. Greeted by meticulously maintained landscaping & hardscaping, this home offers a serene retreat from the hustle and bustle of daily life. Inside, discover four beds and two baths, providing ample space for family & guests. The fully updated kitchen and laundry area boast modern finishes & appliances, making everyday tasks a breeze. Entertain with ease in the spacious living areas, or retreat to the deck or backyard oasis, where you'll find plenty of room for outdoor gatherings and activities. With tons of extra space, this home offers endless possibilities to suit your lifestyle. Conveniently located near parks, UVic, Camosun College, St. Michaels University School & amenities, yet tucked away in a peaceful enclave, this property truly offers the best of both worlds. Don't miss your chance to own a piece of Mt. Tolmie paradise!

FLOOR PLANS



LOWER FLOOR
1510 SQ. FT.
6'-8" CEILING HEIGHT





GET TO KNOW US



Ole Schmidt
MANAGING BROKER,
CO-OWNER

William Johnson
REALTOR®

Hannah Hayworth
REALTOR®

Mikey Williams
REALTOR®

EMAIL

Folio@CloverResidential.com

TEXT/CALL

250-256-8371

[CLOVERRESIDENTIAL.COM](https://www.cloverresidential.com)

Clover Residential Ltd. | 394 Moss Street, Victoria, BC, V8V 4N1

THE
FOLIO GROUP

THE
FOLIO
GROUP



CLOVER
RESIDENTIAL