

FOR SALE

THE  
**FOLIO  
GROUP**

980

PRESENTS

**980 Wilmer St**



**CLOVER**  
RESIDENTIAL



DISCOVER

# Fairfield - Gonzales



Equally hip and historic, Fairfield is one of Victoria's most desirable neighbourhoods. Park your car and start exploring—you're within walking distance of everything.



**\$2,049,000**

**Listed by:**

Ole Schmidt & William Johnson

---

**Neighbourhood:** Fairfield

---

**Bedrooms:** 4

---

**Bathrooms:** 4

---

**Living Area:** 2,322 Sq.Ft.

---

**Year Built:** 2020

---

**Taxes:** \$9,242 (Tax Year: 2023)

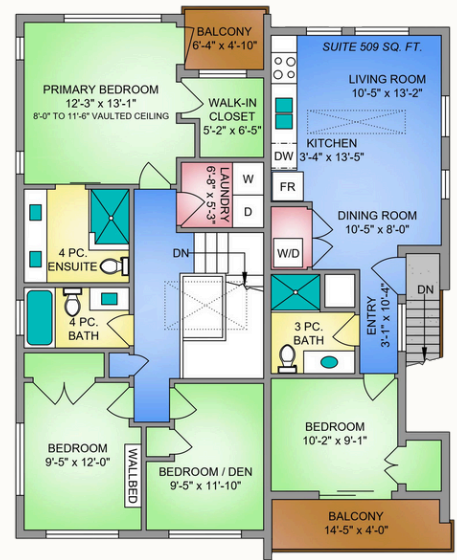
---

**MLS:** 966673

## 980 Wilmer St

This meticulously crafted residence by Bowcey Construction offers the epitome of modern luxury living, plus the benefits of a LEGAL 1-bed suite. Step inside to discover a thoughtfully designed interior adorned with oak engineered flooring, a cozy gas f/p & custom cabinetry. The kitchen showcases KitchenAid appliances, quartz countertops, Italian tile backsplash, and a large island. Entertain in the sunken living room with a NanaWall glass wall system that seamlessly connects the indoor & outdoor living spaces. Upstairs, enjoy a luxurious primary suite with vaulted ceilings, a rejuvenating steam shower, heated floors, walk-in closet, and private deck. Two additional bedrooms provide ample space for guests. The suite above the garage offers versatility and privacy, complete with a separate entrance, balcony, 3pc bath & laundry. Outside, enjoy a gas fire pit, raised patio, and fenced yard. This exceptional Fairfield/Gonzales property offers unparalleled comfort, style, and functionality.

# FLOOR PLANS





## GET TO KNOW US



**Ole Schmidt**  
MANAGING BROKER,  
CO-OWNER

**William Johnson**  
REALTOR®

**Hannah Hayworth**  
REALTOR®

**Mikey Williams**  
REALTOR®

### EMAIL

[Folio@CloverResidential.com](mailto:Folio@CloverResidential.com)

### TEXT/CALL

250-256-8371

[CLOVERRESIDENTIAL.COM](https://www.cloverresidential.com)

Clover Residential Ltd. | 394 Moss Street, Victoria, BC, V8V 4N1

THE  
**FOLIO GROUP**

THE  
**FOLIO**  
**GROUP**



**CLOVER**  
RESIDENTIAL