

FOR SALE

THE
FOLIO
GROUP

PRESENTS

#302 - 555 Chatham St



CLOVER
RESIDENTIAL



DISCOVER

Downtown



Situated along Victoria's picturesque Inner Harbour, Downtown is a vibrant neighbourhood ideal for shopping, dining, and leisurely spending your day and night. Bike or walk, you're always near the waterfront as well as neighbouring urban villages.



\$499,000

Neighbourhood: Downtown

Bedrooms: 1

Bathrooms: 1

Living Area: 584 Sq.Ft. (strata plan)

Year Built: 2000

Strata Fee: \$344.51

Taxes: \$2,220 (Tax Year: 2023)

MLS: 960608

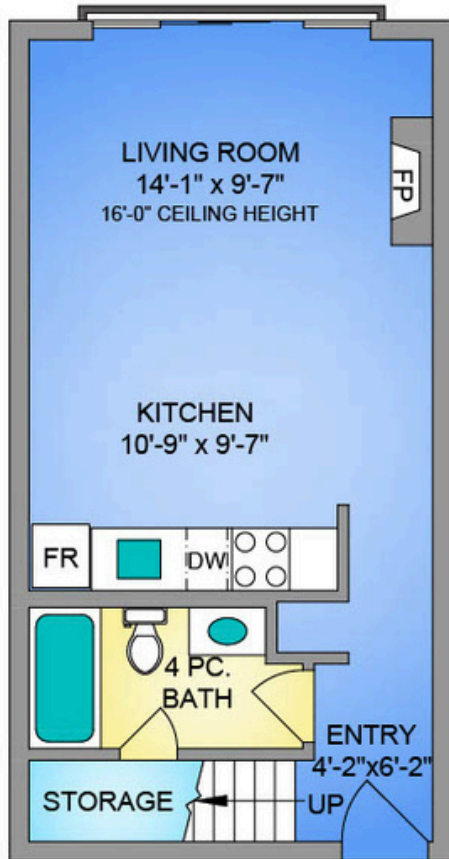
#302 - 555 Chatham St

Authentic to the Downtown West Coast lifestyle, here is your rare opportunity to secure a trendy loft style condo, situated by Victoria's vibrant & historic Chinatown. Split between 2 levels with soaring windows and 16 ft ceilings, open the doors to your Juliet balcony for the full indoor/outdoor experience. Bright and airy with an open plan and peaceful views, the living area boasts a cozy gas fireplace (incl. in strata fee). Retreat up to your spacious primary bedroom which provides ample comfort with a large closet and convenient insuite laundry. Brand new remote operated blackout blinds will take you from day to night! The popular Chatham Studio Lofts offer 1 block proximity to the picturesque harbour, a range of unique amenities with an eclectic & evolving neighbourhood, and are set in a well-maintained building with a proactive strata. Enjoy 360° ocean/city views from the rooftop deck. Plus, pets allowed with no size restrictions, and you've got large in unit & separate storage.

FLOOR PLANS

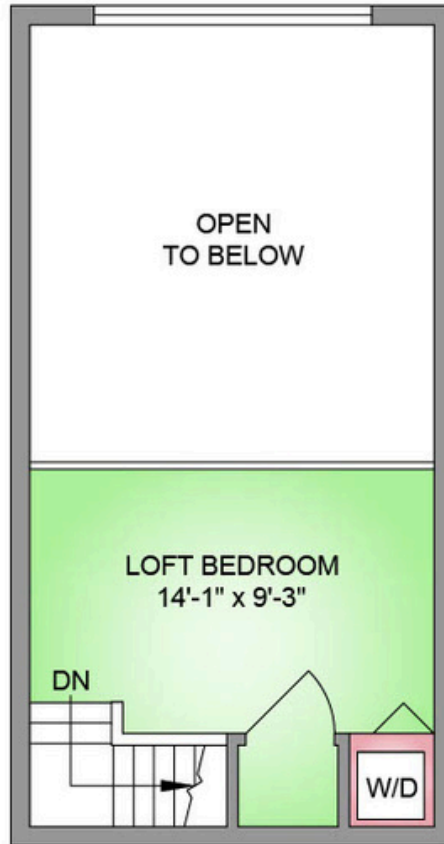
MAIN FLOOR

420 SQ. FT.
16' TO 7'-7" CEILING HEIGHT

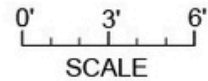


UPPER FLOOR

190 SQ. FT.
7'-5" CEILING HEIGHT



NORTH



250-884-9753
matt@propermeasure.com
www.propermeasure.com

UNIT 302 - 555 CHATHAM STREET	
MAY 2, 2024	
PREPARED FOR THE EXCLUSIVE USE OF CLOVER RESIDENTIAL LTD	
PLANS MAY NOT BE 100% ACCURATE, IF CRITICAL BUYER TO VERIFY.	
FLOOR	AREA (SQ. FT.)
MAIN	420
UPPER	190
TOTAL	610



GET TO KNOW US



Hannah Hayworth

REALTOR®

Hannah@cloverresidential.com

CLOVERRESIDENTIAL.COM

Clover Residential Ltd. | 394 Moss Street, Victoria, BC, V8V 4N1

THE
FOLIO GROUP

THE
**FOLIO
GROUP**



CLOVER
RESIDENTIAL