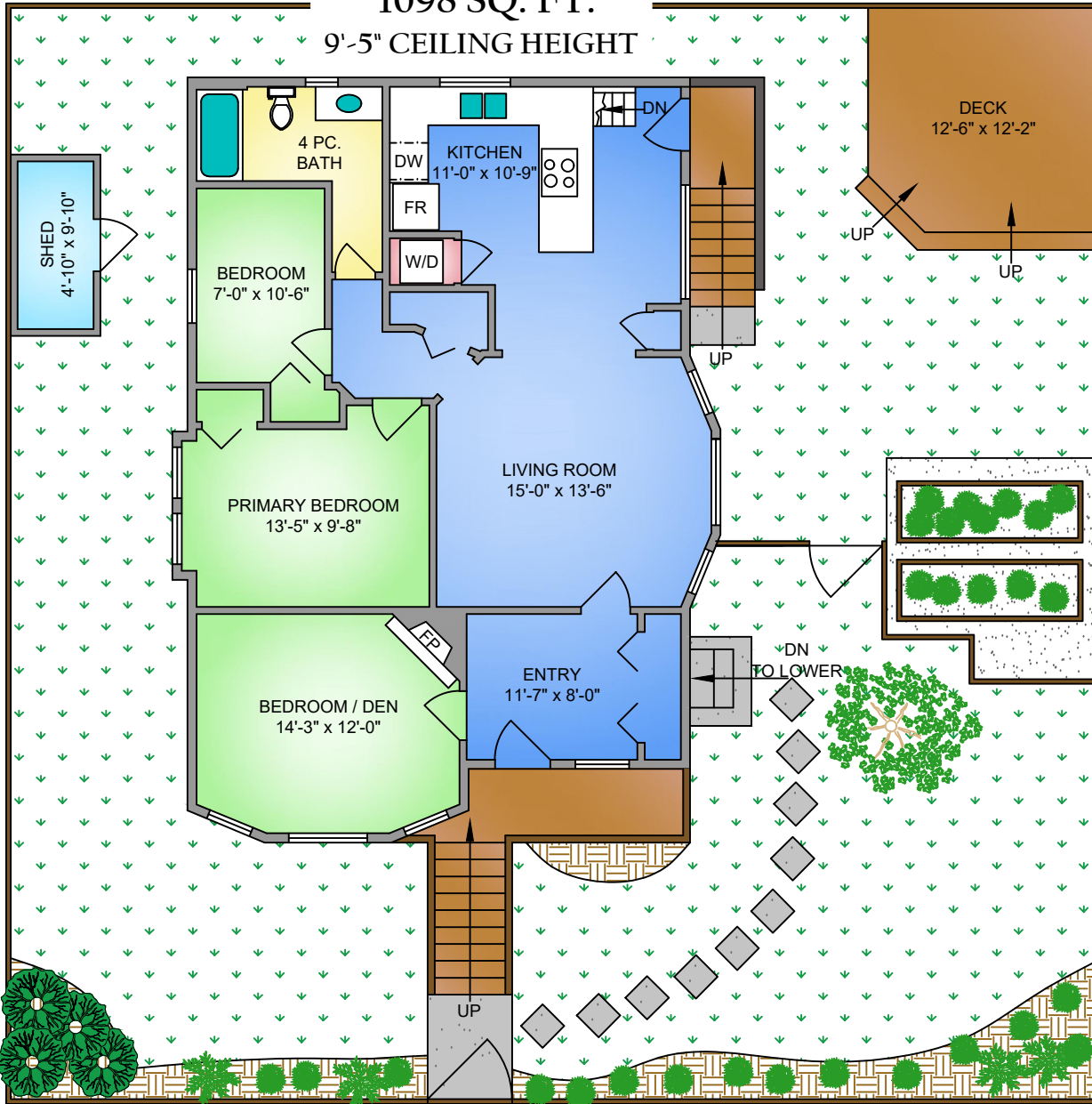


MAIN FLOOR

1098 SQ. FT.

9'-5" CEILING HEIGHT



THE FOLIO GROUP

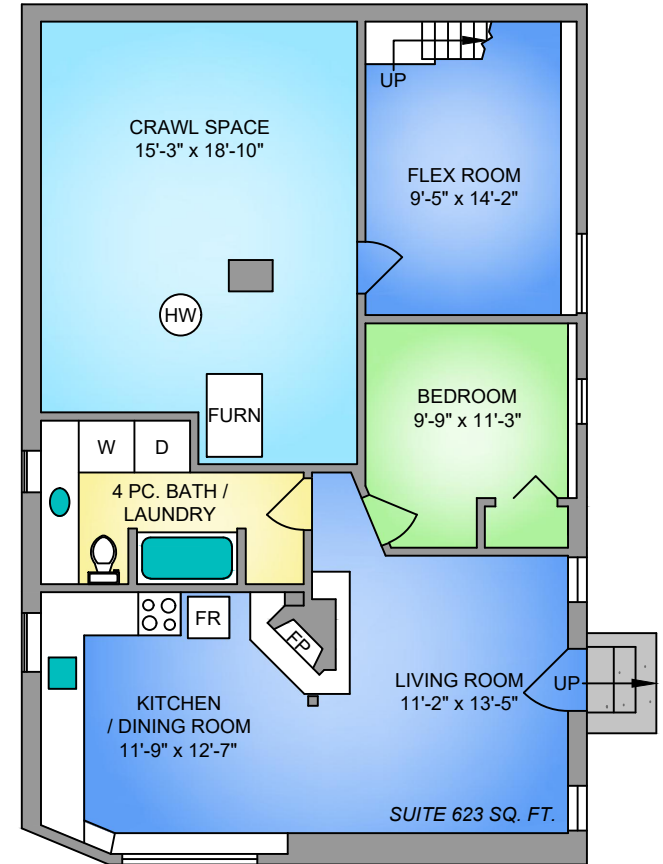


CLOVER RESIDENTIAL

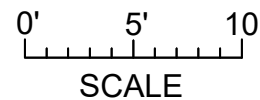
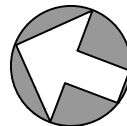
LOWER FLOOR

789 SQ. FT.

7'-2" CEILING HEIGHT



NORTH



250-884-9753
matt@propermeasure.com
www.propermeasure.com

656 SUMAS STREET

MAY 13, 2024

PREPARED FOR THE EXCLUSIVE USE OF CLOVER RESIDENTIAL LTD
PLANS MAY NOT BE 100% ACCURATE, IF CRITICAL BUYER TO VERIFY.

FLOOR	AREA (SQ. FT.)	
	FINISHED	DECK
MAIN	1098	147
LOWER	789	-
TOTAL	1887	147