

FOR SALE

THE
**FOLIO
GROUP**

PRESENTS

1532 Palahi Pl



CLOVER
RESIDENTIAL



DISCOVER

Saanich East



Saanich East is a major residential area with many parks, golf courses, running and hiking trails, and limitless ways to leisurely spend your Sunday afternoons.



\$1,375,000

Neighbourhood: SE Mt. Doug

Bedrooms: 3

Bathrooms: 3

Living Area: 1961 Sq.Ft.

Year Built: 1984

Lot Size: 6,029 Sq.Ft.

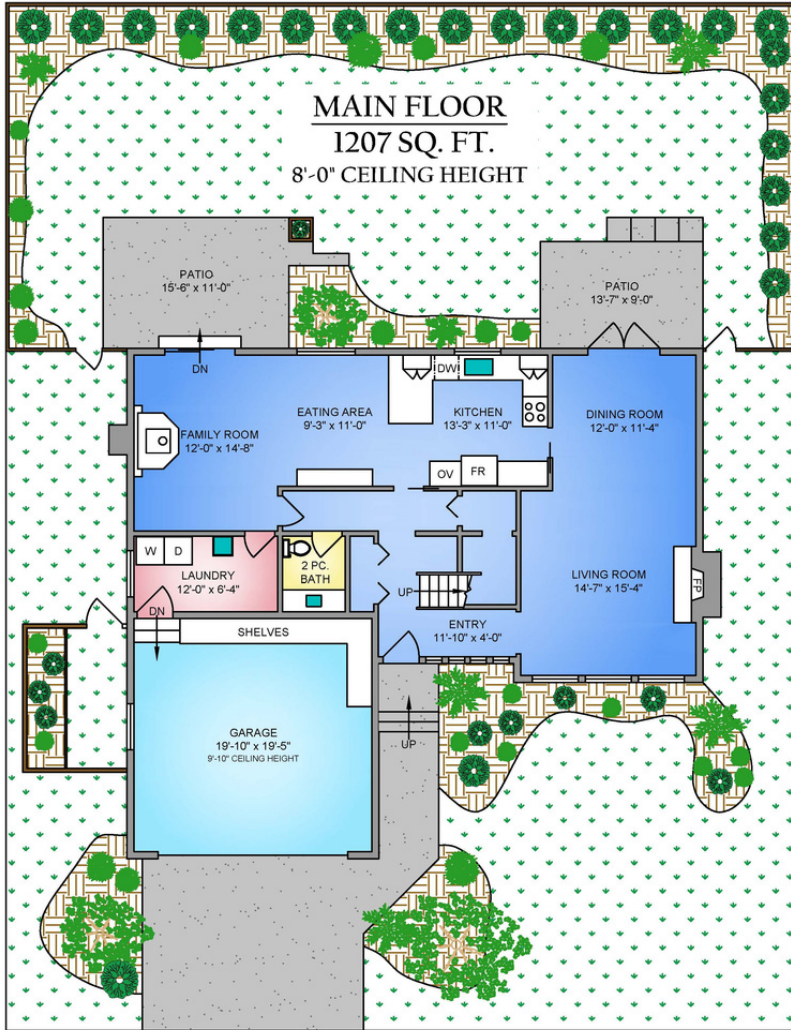
Taxes: \$5,505 (Tax Year: 2023)

MLS: 955610

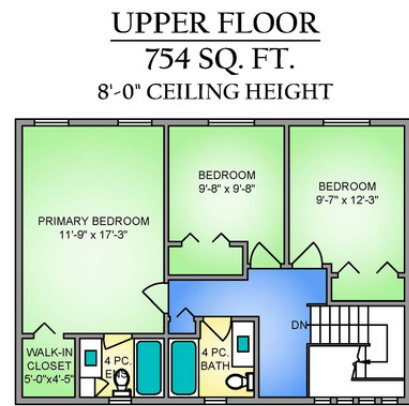
1532 Palahi Pl

Boasting exceptional curb appeal on a quiet cul de sac in Mount Doug, this home will surely impress you with its long list of cosmetic & functional updates. Floor to ceiling windows line an airy entry hallway leading to the open concept living and dining area. The recently renovated kitchen is an entertainer's delight, carefully crafted with quality & style in mind, and looking over the family room with a cozy gas fireplace. A large 2 pc bath completes this main level, along with a convenient laundry room and double car garage. With 3 beds up, retreat to your expansive primary bedroom, and move in that California King you've always dreamt of. Enjoy a 4 pc ensuite, walk in closet, and a calming view of mature trees. All 3 bathrooms were just completed, along with a brand new electrical panel, hot water tank, and appliances. Step outside to your fully fenced backyard, with tall hedges for privacy, irrigation in place, and a protected plot for the avid gardener.

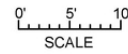
FLOOR PLANS



250-884-9753
matt@propermeasure.com
www.propermeasure.com



NORTH



1532 PALAHI PLACE
MARCH 11, 2024
PREPARED FOR THE EXCLUSIVE USE OF CLOVER RESIDENTIAL
PLANS MAY NOT BE 100% ACCURATE. IF CRITICAL BUYER TO VERIFY

FLOOR	AREA (SQ. FT.)		
	FINISHED	GARAGE	DECK / PATIO
MAIN	1207	418	289
UPPER	754	-	-
TOTAL	1961	418	289



GET TO KNOW US



Ole Schmidt

MANAGING BROKER, CO-OWNER
Ole@cloverresidential.com



Hannah Hayworth

REALTOR®
Hannah@cloverresidential.com



William Johnson

REALTOR®
William@cloverresidential.com

THE
FOLIO
GROUP



CLOVER
RESIDENTIAL