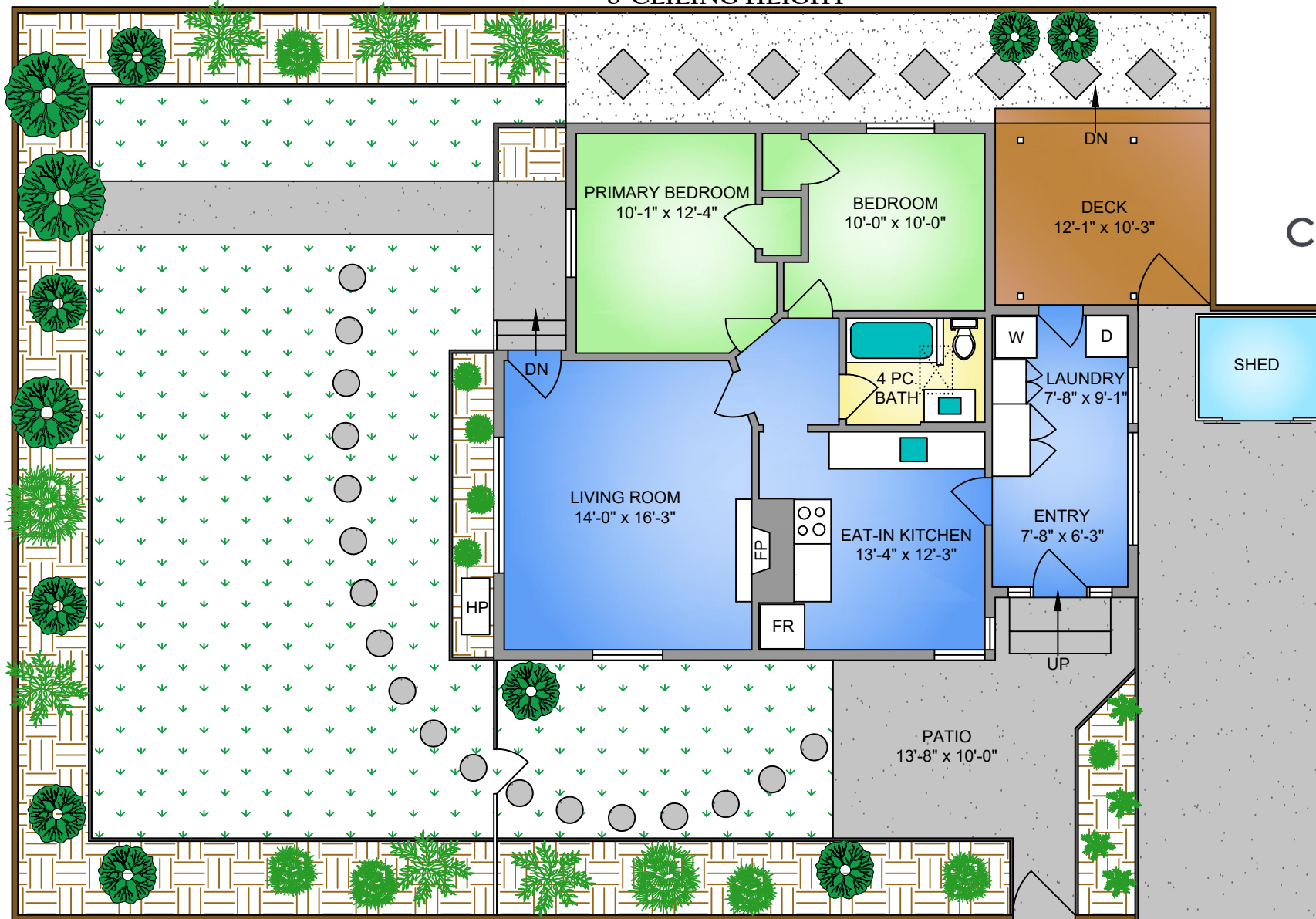


MAIN FLOOR
933 SQ. FT.
8' CEILING HEIGHT

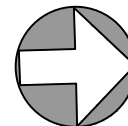
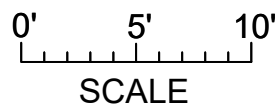
THE
FOLIO GROUP



CLOVER
 RESIDENTIAL



NORTH



2506 ROSEBERRY AVENUE
 JANUARY 30, 2024

PREPARED FOR THE EXCLUSIVE USE OF CLOVER RESIDENTIAL
 PLANS MAY NOT BE 100% ACCURATE. IF CRITICAL BUYER TO VERIFY.

FLOOR	AREA (SQ. FT.)	
	FINISHED	BALCONY
MAIN	933	260



250-884-9753
 matt@propermeasure.com
 www.propermeasure.com