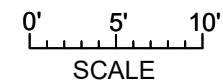
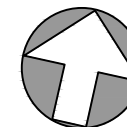




**CLOVER**  
RESIDENTIAL

**MAIN FLOOR**  
**1264 SQ. FT.**  
**8' CEILING HEIGHT**

**NORTH**

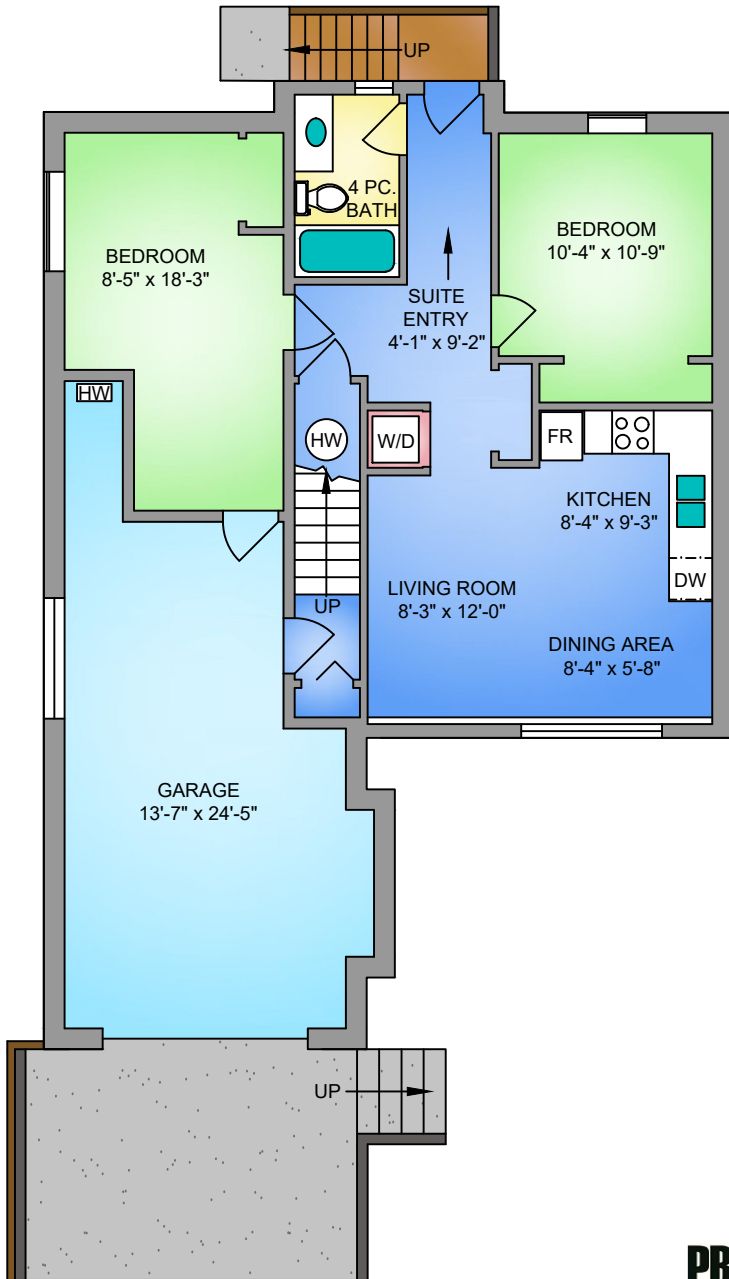


1120 HOLLIS ROAD  
JANUARY 19, 2024

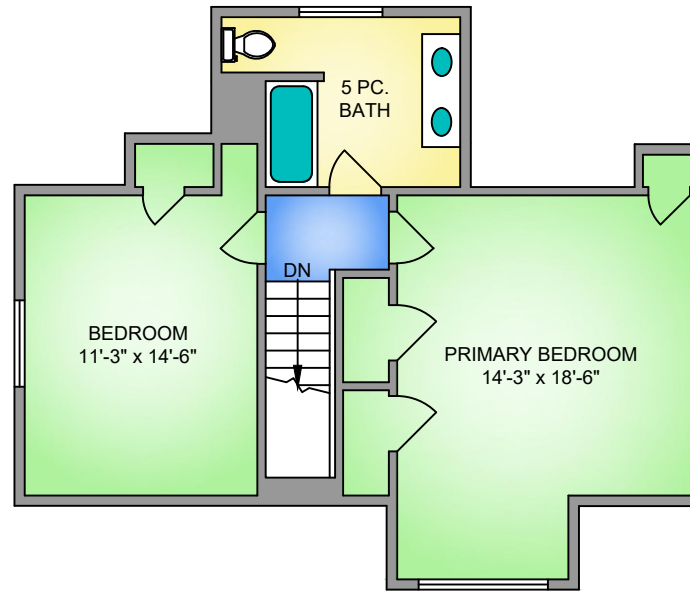
PREPARED FOR THE EXCLUSIVE USE OF CLOVER RESIDENTIAL LTD  
PLANS MAY NOT BE 100% ACCURATE, IF CRITICAL BUYER TO VERIFY.

FLOOR	AREA (SQ. FT.)		
	FINISHED	GARAGE	DECK
MAIN	1264	-	116
UPPER	691	-	-
LOWER	872	395	-
<b>TOTAL</b>	<b>2827</b>	<b>395</b>	<b>116</b>

**LOWER FLOOR**  
**872 SQ. FT.**  
**8' CEILING HEIGHT**



**UPPER FLOOR**  
**691 SQ. FT.**  
**7'-6" CEILING HEIGHT**

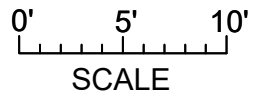
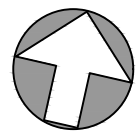


THE  
**FOLIO GROUP**



**CLOVER**  
 RESIDENTIAL

**NORTH**



1120 HOLLIS ROAD JANUARY 19, 2024 PREPARED FOR THE EXCLUSIVE USE OF CLOVER RESIDENTIAL LTD PLANS MAY NOT BE 100% ACCURATE, IF CRITICAL BUYER TO VERIFY.			
FLOOR	AREA (SQ. FT.)		
	FINISHED	GARAGE	DECK
MAIN	1264	-	116
UPPER	691	-	-
LOWER	872	395	-
<b>TOTAL</b>	<b>2827</b>	<b>395</b>	<b>116</b>