

FOR SALE

THE
**FOLIO
GROUP**

PRESENTS

#1002-848 Yates St



CLOVER
RESIDENTIAL



DISCOVER

Downtown



Situated along Victoria's picturesque Inner Harbour, Downtown is a vibrant neighbourhood ideal for shopping, dining, and leisurely spending your day and night. Bike or walk, you're always near the waterfront as well as neighbouring urban villages.



\$549,900

Neighbourhood: Downtown

Bedrooms: 1

Bathrooms: 1

Living Area: 562 Sq.Ft. (strata plan)

Year Built: 2020

Taxes: \$2,182 (Tax Year: 2023)

Strata Fee: \$341.91

MLS: 949324

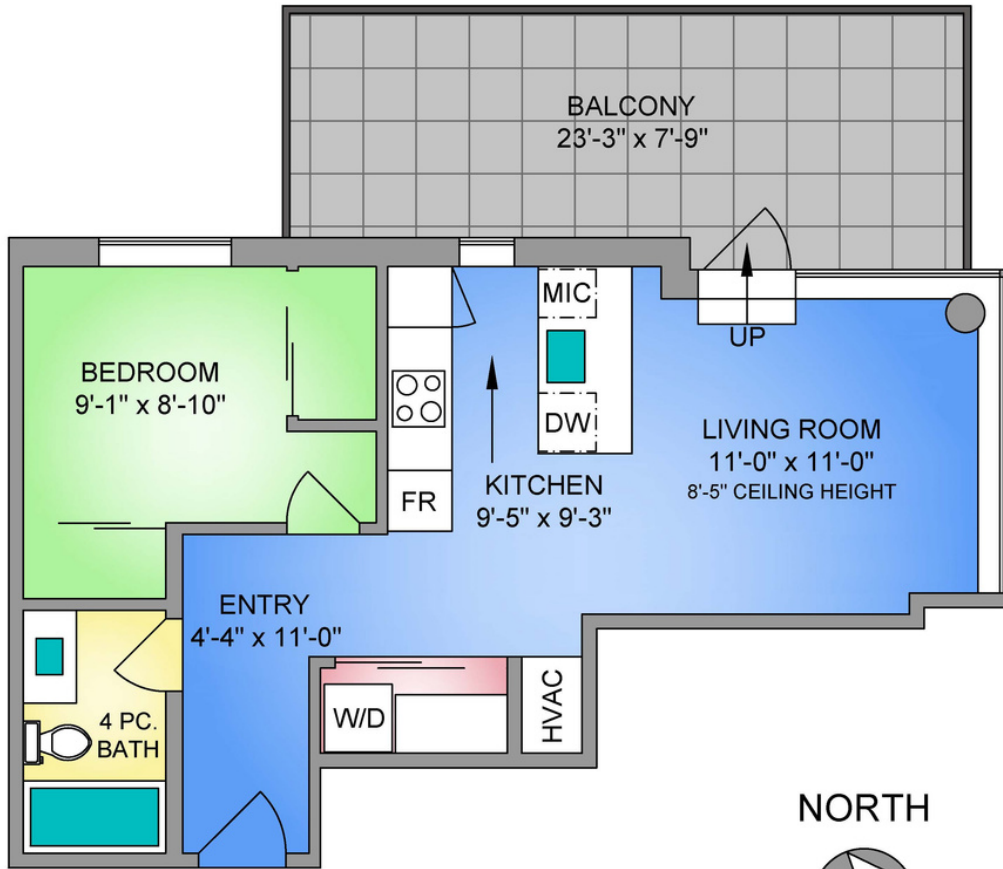
1002-848 Yates St

Experience the epitome of urban living at The Yates on Yates in downtown Victoria, central to it all. This west-facing corner unit elevates your lifestyle with a rare gem – an expansive private patio, perfect for entertaining or relishing city sunsets. The gourmet kitchen boasts top-tier integrated appliances, an induction range, pull-out pantry, & soft-close cabinetry. Offering contemporary finishes, including quartz countertops and wide plank flooring, with a light and versatile palette for your design aspirations. Enjoy year-round comfort with air heating and cooling, plus heated bathroom floors for those chilly mornings. Discover the convenience of TWO spacious closets in the bedroom, upgraded with a quality custom closet system. Indulge in 360-degree views of the city, mountains, and water on the Chard signature rooftop terrace, complemented by BBQs, fire pit, garden, and pet play area. Move-in ready and impeccably maintained, your downtown dream home awaits at The Yates on Yates.

UNIT 1002 - 848 YATES STREET

562 SQ. FT.

7'-6" CEILING HEIGHT



NORTH



| UNIT 1002 - 848 YATES STREET | | |
|--|----------------|---------|
| DECEMBER 06, 2023 | | |
| PREPARED FOR THE EXCLUSIVE USE OF CLOVER RESIDENTIAL LTD PLANS MAY NOT BE 100% ACCURATE. IF CRITICAL BUYER TO VERIFY. | | |
| FLOOR | AREA (SQ. FT.) | |
| | FINISHED | BALCONY |
| TENTH | 562 | 189 |



250-884-9753
matt@propermeasure.com
www.propermeasure.com



GET TO KNOW US



Ole Schmidt

MANAGING BROKER, CO-OWNER
Ole@cloverresidential.com



Hannah Hayworth

REALTOR®
Hannah@cloverresidential.com

THE
**FOLIO
GROUP**



CLOVER
RESIDENTIAL