

FOR SALE



PRESENTS

#1205-1020 View St



DISCOVER

Downtown



Situated along Victoria's picturesque Inner Harbour, Downtown is a vibrant neighbourhood ideal for shopping, dining, and leisurely spending your day and night. Bike or walk, you're always near the waterfront as well as neighbouring urban villages.



\$615,000

Neighbourhood: Downtown

Bedrooms: 2

Bathrooms: 2

Living Area: 1,107 Sq.Ft. (strata plan)

Year Built: 1991

Lot Size: 1,107 Sq.Ft. (strata plan)

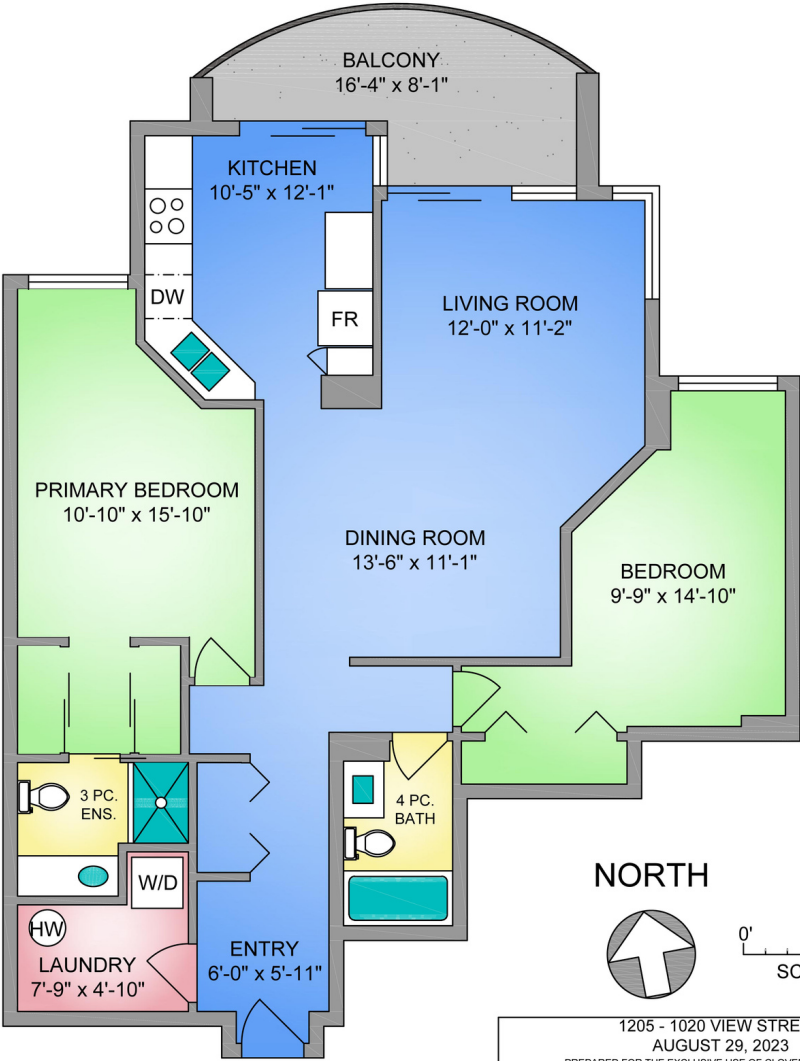
Taxes: \$2,935 (Tax Year: 2023)

MLS: 942189

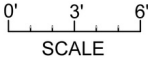
#1205-1020 View St

Welcome to the popular Regents Park in the Harris Green District, a well maintained steel and concrete complex featuring spacious units and unbeatable access to amenities. Boasting one of the most popular floor plans, this 2 bed, 2 bath unit is over 1100 sq ft! Set high up on the 12th floor, appreciate the mix of urban and natural views with distant forested hills and peaceful gardens below. The large entry way features a rare full utility room with insuite laundry & pantry, and leads to the open concept living and dining room. Floor to ceiling doors provide access to an expansive balcony that is BBQ friendly, and are conveniently placed in both the kitchen and living area, bringing in plenty of natural light. The primary bedroom has a double walk through closet ending at a private 3pc ensuite with a walk in shower. Finally, underground parking with EV charging roughed in, separate storage, a range of building amenities, and a proactive strata make this property all the more appealing!

UNIT 1205 - 1020 VIEW STREET
1108 SQ. FT.
8'-6" CEILING HEIGHT



NORTH



1205 - 1020 VIEW STREET		
AUGUST 29, 2023		
PREPARED FOR THE EXCLUSIVE USE OF CLOVER RESIDENTIAL		
PLANS MAY NOT BE 100% ACCURATE, IF CRITICAL BUYER TO VERIFY.		
FLOOR	AREA (SQ. FT.)	
	FINISHED	BALCONY
TWELFTH	1108	101



250-884-9753
matt@propermeasure.com
www.propermeasure.com



GET TO KNOW US



Ole Schmidt

MANAGING BROKER, CO-OWNER
Ole@cloverresidential.com



Hannah Hayworth

REALTOR®
Hannah@cloverresidential.com

CLOVERRESIDENTIAL.COM

Clover Residential Ltd. | 394 Moss Street, Victoria, BC, V8V 4N1

THE
FOLIO GROUP

THE
FOLIO
GROUP



CLOVER
RESIDENTIAL