

FOR SALE

THE
FOLIO
GROUP

PRESENTS

#102-200 Douglast St





DISCOVER

James Bay



When people think of James Bay, the word diverse comes to mind —you'll encounter luxury condos mixed in with older townhomes, 100-year-old single-family homes, new strata duplexes and conversions, with blocks and blocks of character. James Bay is an area where both locals and tourists can marvel at stunning turn-of-the-century architecture.



\$745,000

Neighbourhood: James Bay

Bedrooms: 1 + den

Bathrooms: 1

Year Built: 2014

Lot Size: 778 Sq.Ft. (strata plan)

Taxes: \$3,216 (Tax Year: 2022)

MLS: 942903

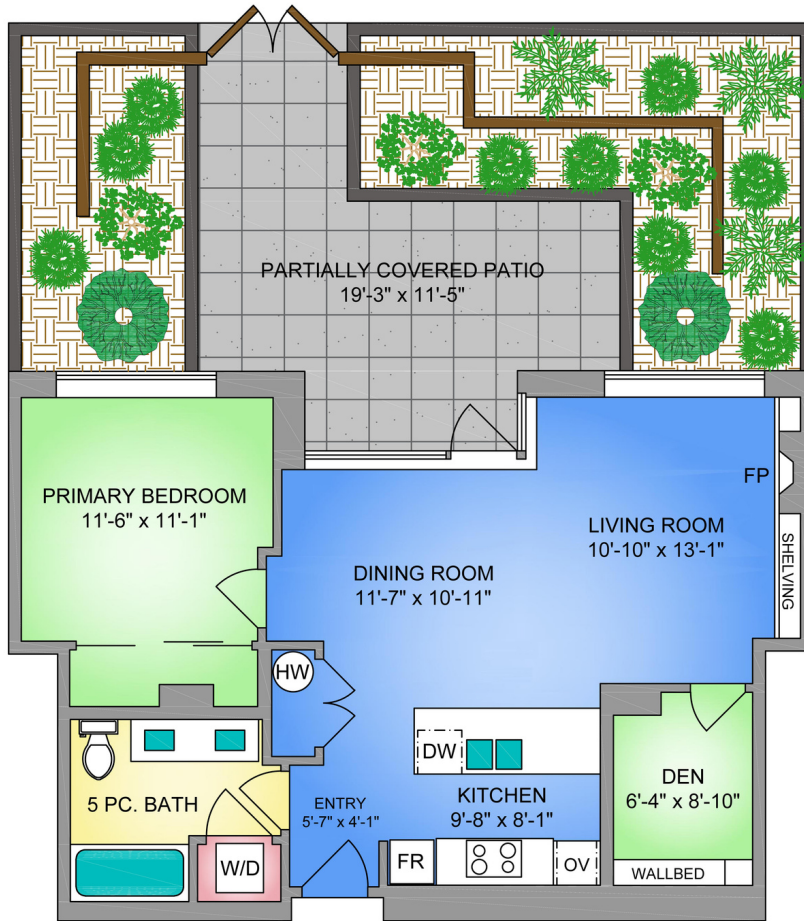
102-200 Douglas St

Don't miss out on this luxurious patio level 1 bed + den unit, set in an executive-style steel & concrete building, facing prized & popular Beacon Hill Park. 'Douglas on the Park' in James Bay boasts incredible access to communities with 3 unique hubs surrounding it and is 1 min from the beach. Walk adored neighbourhoods including hip and historic Fairfield with Cook St Village or vibrant Downtown. Inside features include high ceilings, hardwood floors, quartz countertops, and an abundance of natural light coming through the oversized windows. A large patio with park views allows for entertaining with ease. Beacon Hill Park is the crown jewel of Victoria's parks with 183 acres of green space in the heart of the city. Paired with Dallas Waterfront, it offers something for everyone. Bike the trails, enjoy sports & recreation, or the famous petting zoo & drive-in ice cream. The unit conveniently includes a secure underground parking spot & separate storage. Friendly and proactive strata.

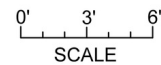
UNIT 102 - 200 DOUGLAS STREET

785 SQ. FT.

9'-4" CEILING HEIGHT



NORTH



250-884-9753
matt@propermeasure.com
www.propermeasure.com

UNIT 102 - 200 DOUGLAS STREET		
SEPTEMBER 13, 2023		
PREPARED FOR THE EXCLUSIVE USE OF CLOVER RESIDENTIAL		
PLANS MAY NOT BE 100% ACCURATE. IF CRITICAL BUYER TO VERIFY.		
FLOOR	AREA (SQ. FT.)	
	FINISHED	PATIO
FIRST	785	226



GET TO KNOW US



Ole Schmidt

MANAGING BROKER, CO-OWNER
Ole@cloverresidential.com



Hannah Hayworth

REALTOR®
Hannah@cloverresidential.com

CLOVERRESIDENTIAL.COM

Clover Residential Ltd. | 394 Moss Street, Victoria, BC, V8V 4N1

— THE —
FOLIO GROUP

THE
**FOLIO
GROUP**



CLOVER
RESIDENTIAL