

FOR SALE

THE
**FOLIO
GROUP**

PRESENTS

#1408-728 Yates Street



CLOVER
RESIDENTIAL



DISCOVER

Downtown



Situated along Victoria's picturesque Inner Harbour, Downtown is a vibrant neighbourhood ideal for shopping, dining, and leisurely spending your day and night. Bike or walk, you're always near the waterfront as well as neighbouring urban villages.



\$985,000

Neighbourhood: Downtown

Bedrooms: 2

Bathrooms: 2

Living Area: 868 Sq.Ft. (strata plan)

Year Built: 2015

Lot Size: 868 Sq.Ft. (strata plan)

Taxes: \$3,612 (Tax Year: 2022)

MLS: 936726

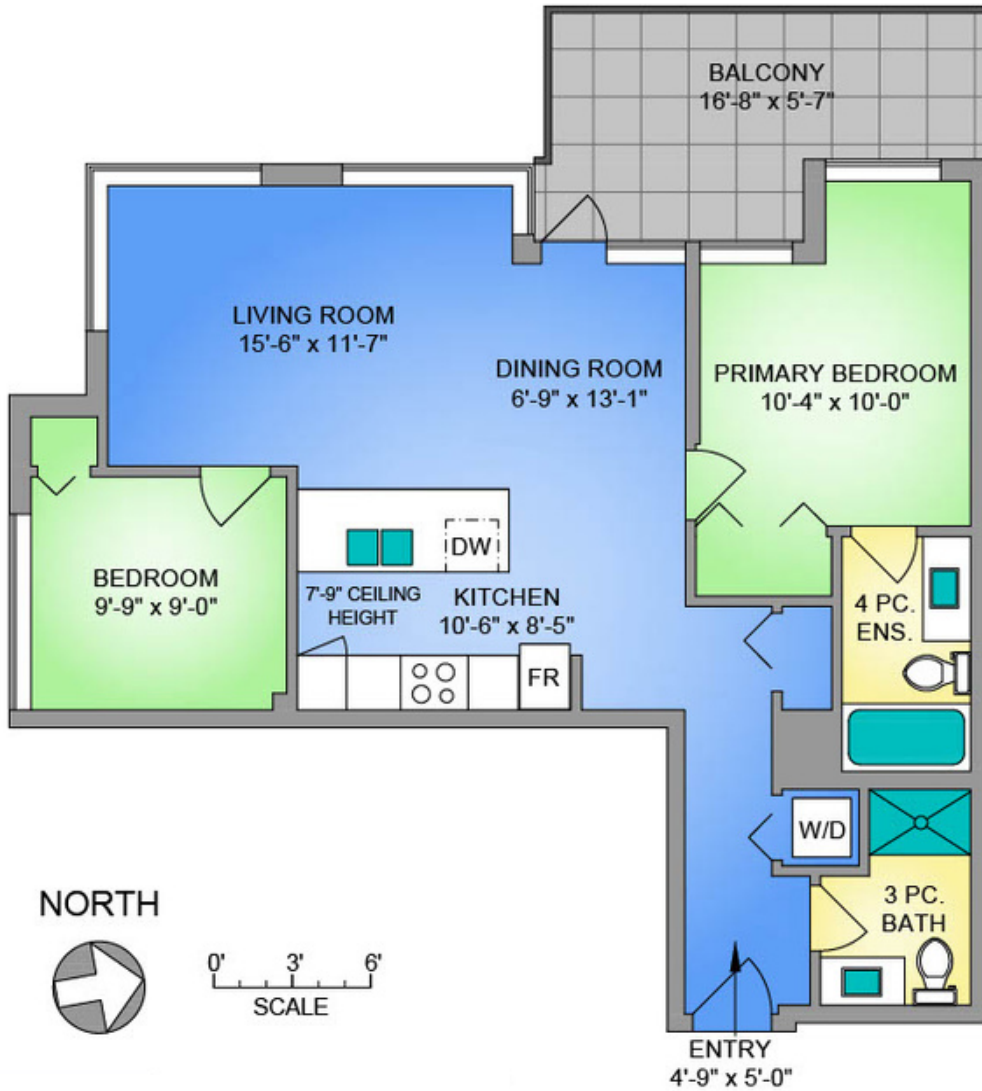
#1408-728 Yates Street

With sky-high views of Downtown Victoria and the Inner Harbour, this rare 14th floor Southwest corner unit looks out to where the city meets the sea. A larger 125 sq ft balcony and expansive windows throughout allow for the ultimate 180 degree viewpoint of the mountaintops peaking over the ocean. Watch the seaplanes land and the cruise ships head to dock from this 2 bed, 2 bath unit, or step right out into the vibrant, amenity rich city and explore on foot. The award winning steel and concrete Era building was developed by reputable Concert Properties and incorporates a fully restored heritage façade as well as locally sourced and recycled building materials. These units feature open concept living with chic modern finishes including SS appliances, quartz countertops, and a 4 pc ensuite with a soaker tub. Insuite laundry, underground parking, and separate storage are conveniently included. Plus, the building has a beautiful common lounge & patio, and short term rentals are permitted.

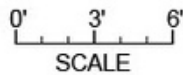
UNIT 1408 - 728 YATES STREET

868 SQ. FT.

8'-10" CEILING HEIGHT



NORTH



250-884-9753
 matt@propermeasure.com
 www.propermeasure.com

UNIT 1408 - 728 YATES STREET		
JULY 11, 2023		
PREPARED FOR THE EXCLUSIVE USE OF CLOVER RESIDENTIAL		
PLANS MAY NOT BE 100% ACCURATE, IF CRITICAL BUYER TO VERIFY.		
AREA (SQ. FT.)		
FLOOR	FINISHED	BALCONY
FOURTEENTH	868	125



GET TO KNOW US



Ole Schmidt

MANAGING BROKER, CO-OWNER
Ole@cloverresidential.com



Hannah Hayworth

REALTOR®
Hannah@cloverresidential.com

THE
**FOLIO
GROUP**



CLOVER
RESIDENTIAL